



Regional Transportation Management Centre

Update for IMTC

May 16, 2013

Ashok Bhatti, Regional Manager – RTMC

Ministry of Transportation and Infrastructure



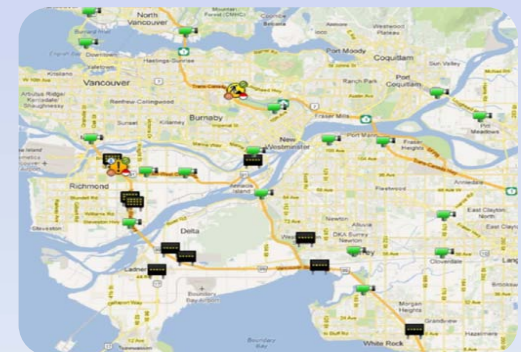
Agenda

- The RTMC
- How the RTMC Works
- Benefits of RTMC
- Event Cycle
- RTMC Phases
- Staffing
- Current Schedule
- Other Key Points



The RTMC

- A multi-jurisdiction, multi-agency facility designed to:
 - enable real time monitoring of traffic congestion and incident management
 - promote regional data sharing and integration with public agencies and municipalities.
 - provide coordinated response during emergency events





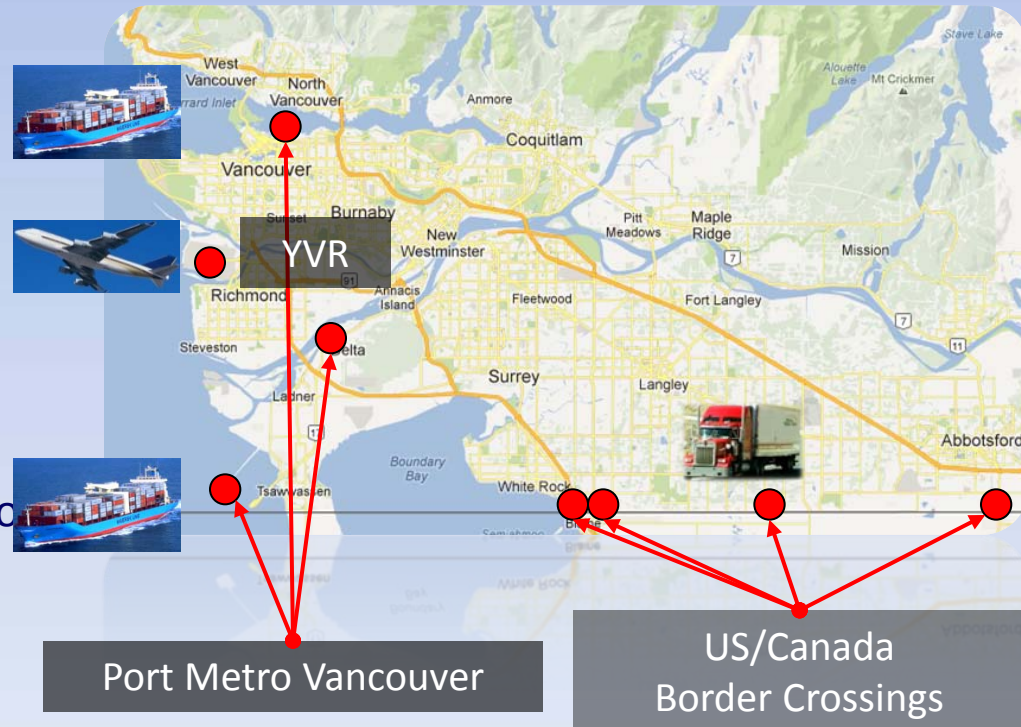
Funding Partners



Lower Mainland, BC

Demand for ITS

- Lower Mainland is a key Asia-Pacific Gateway
- Lower Mainland has a strong Canada/US cross border trade market
- Builds on existing investments in the Lower Mainland
- Agencies looking to ITS systems to optimize key gateways representing mutual benefits





How the RTMC Works

- The RTMC will use an advanced traffic management system to:
 - Centralize existing operations centres (George Massey Tunnel, Cassiar, Lions Gate Bridge)
 - Develop seamless interface with our existing DriveBC website
 - Provide operators with automatic response plans and event messaging
 - Integrate with provincial Dynamic Messaging Signs (DMS) system
 - Integrate data and video sharing from our transportation partners
 - Integrate the municipal major road network within the Lower Mainland





- RTMC Building (TMC)
 - Post Disaster Recovery Building
 - Payment Card Industry Data Security Standard (Tolling)
 - Built to LEED Gold Standard
- RTMC Centre
 - State of the art facility
 - Connected to an expanded fibre network
 - Can be setup as a post disaster operations centre for multiple agencies





Benefits of the RTMC

- Cost savings from centralizing LOC operations
- Timely event notification with new partnerships
 - PRIME (Police Resource Information Management Environment)
 - Media (Direct link to Traffic News)
 - Access to Municipal TMC's
 - Access to Port of Metro Vancouver, YVR, and BC Ferries TMC's
- Consistent and accurate information with RTMC controlling all Lower Mainland entry
- Efficient operations with a singular traffic management software reducing multiple systems.
- Access to a larger road network (when including the MRN) for event planning and notification (detours, assessing impact to our network, planned events). RTMC is not managing events on MRN opening day.



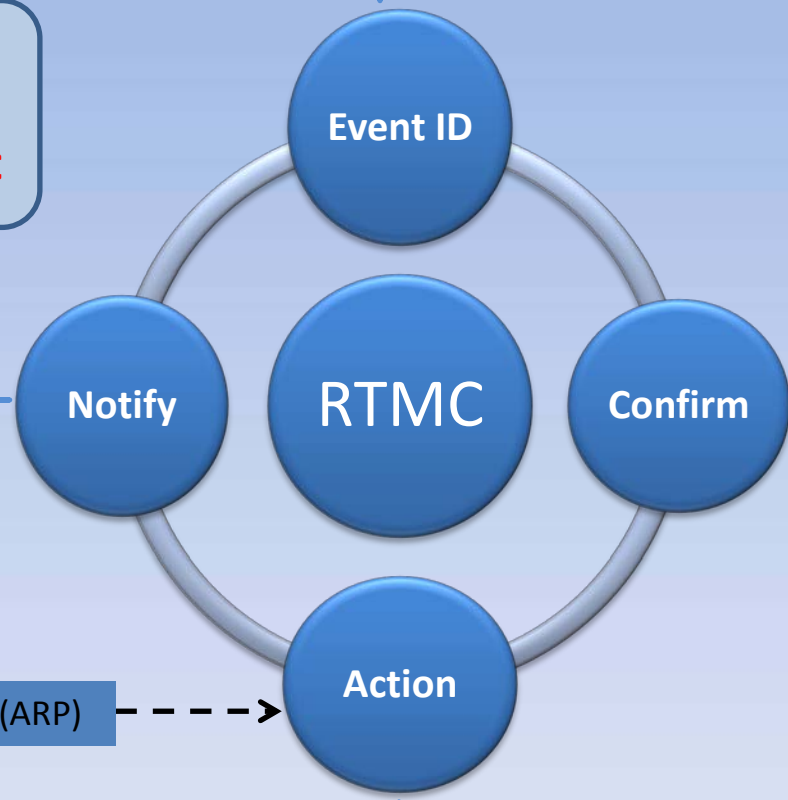
Maintenance Contractor
Media (Radio/Social/TV)

Public
ECOMM (911)

Municipalities
Transportation Agencies

Phases of an event cycle:
BLACK – PHCC
RED – ADDED WITH RTMC

DriveBC
DMS Signs
Media (Radio/Social/TV)



Ministry Video Cams
Maintenance Contractor
Municipal Video Cams
Congestion Maps
Automatic Detection
TCOMM
Vancouver TMC
Port of Metro Van TMC
Surrey TMC
YVR
BC Ferries

Contact District Operations
Contact Maintenance Contractor
Contact Ports, YVR, Border Agencies

Contact Municipalities & Other TMC'S
Contact ECOMM/Emergency Dispatch



RTMC Phase 1

- Phase 1:
 - Integration of the location operations centres (GMT, Cassiar, LGB)
 - Integration of the DriveBC, Real Time Data Systems (TransLink), provincial DMS system, and Advanced Traveller Information System (ATMS).
 - Integration with ECOMM and 911 information
 - Information sharing agreements with:
 - City of Vancouver
 - City of Surrey
 - Port of Metro Vancouver
 - TransLink

Completion by Fall 2013



RTMC Phase 2 & Future Phases

- Phase 2:
 - Automatic Incident Detection (PMH1)
 - Automatic Response Plans (PMH1)
 - Information sharing agreements with other Metro Vancouver municipalities and agencies
- Future Phases:
 - More ITS Infrastructure (DMS signs, Camera's, Incident detection loops, etc.)
 - Direct Fibre links to other TMC's
 - Event Management on the Major Road Network

Completion by
March 1st, 2014



Other Key Points

- RTMC will maintain its role as a provincial highway condition and event reporting centre
- The ATMS system will be utilized within the Lower Mainland to start. Plans are to grow with the system.
- The Funding for the RTMC project expires end of fiscal (March 2014)
- RTMC is setup for emergency operations (earthquake) with protocol/procedures currently being updated



Proposed Timeline

- Building Completion, April 2013
- RTMC Building Occupancy, May/June 2013
- RTMC 'Opening Day', Fall 2013



Questions?

Ashok Bhatti

Regional Manager, RTMC

Ministry of Transportation and Infrastructure

PH: 604-660-1716

Email: Ashok.Bhatti@gov.bc.ca