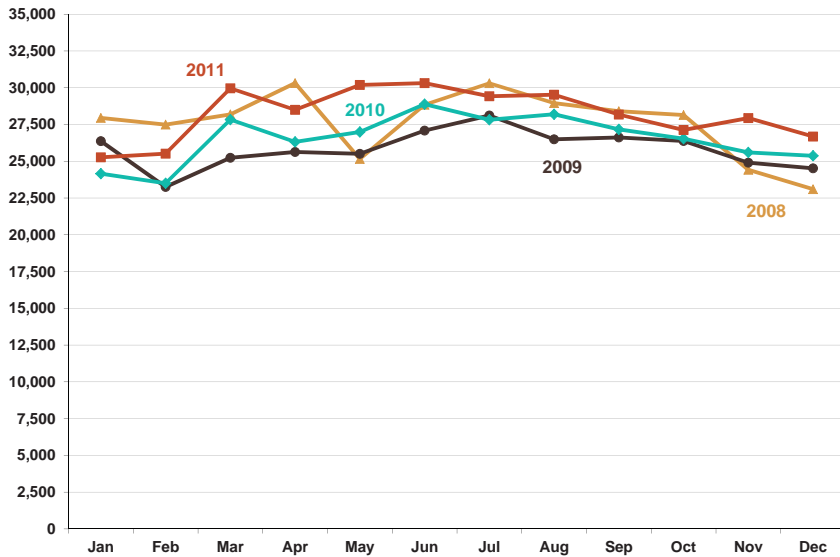


PACIFIC HIGHWAY TRUCK VOLUMES, 2008-2011

SOUTHBOUND



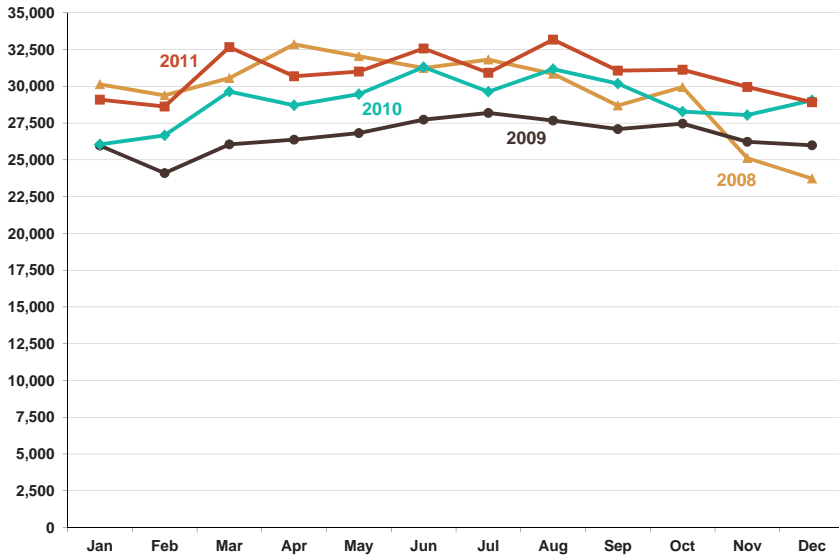
	2008	2009	2010	2011
Jan	27,938	26,368	24,149	25,265
Feb	27,486	23,247	23,499	25,516
Mar	28,180	25,236	27,828	29,960
Apr	30,306	25,631	26,308	28,491
May	25,145	25,499	26,983	30,183
Jun	28,832	27,083	28,878	30,308
Jul	30,304	28,110	27,815	29,421
Aug	28,953	26,493	28,188	29,518
Sep	28,403	26,614	27,164	28,172
Oct	28,142	26,378	26,526	27,119
Nov	24,416	24,896	25,599	27,937
Dec	23,090	24,520	25,372	26,680
TOTAL	331,195	310,075	318,309	338,570

Data sources: U.S. Customs & Border Protection

Data compiled by: Whatcom Council of Governments

PACIFIC HIGHWAY TRUCK VOLUMES, 2008-2011

NORTHBOUND



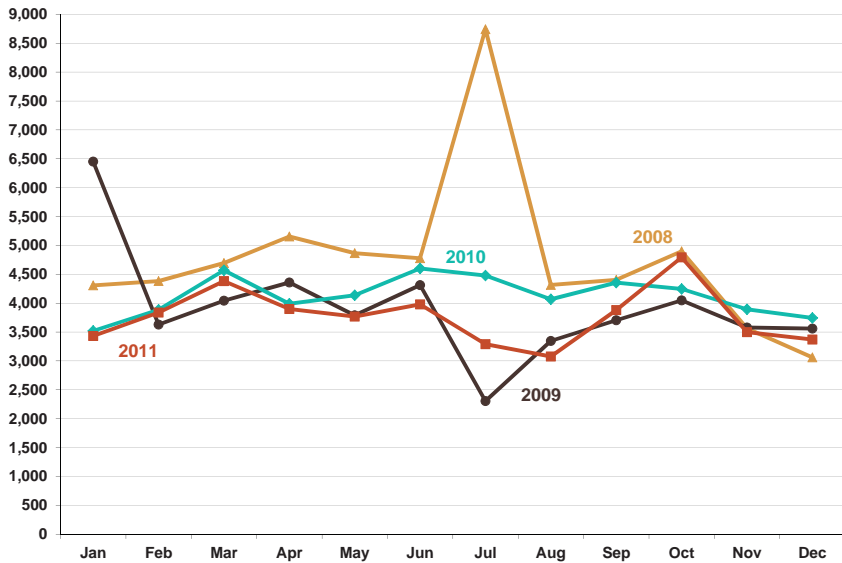
	2008	2009	2010	2011
Jan	30,139	25,972	26,050	29,095
Feb	29,384	24,099	26,664	28,630
Mar	30,557	26,055	29,642	32,663
Apr	32,853	26,374	28,713	30,680
May	32,042	26,826	29,469	31,001
Jun	31,247	27,740	31,305	32,574
Jul	31,821	28,194	29,632	30,922
Aug	30,847	27,673	31,168	33,174
Sep	28,691	27,090	30,187	31,072
Oct	29,946	27,464	28,289	31,129
Nov	25,121	26,227	28,045	29,962
Dec	23,732	25,993	29,059	28,921
TOTAL	356,380	319,707	348,223	369,823

Data sources: Canada Border Services Agency

Data compiled by: Whatcom Council of Governments

LYNDEN/ALDERGROVE TRUCK VOLUMES, 2008-2011

SOUTHBOUND



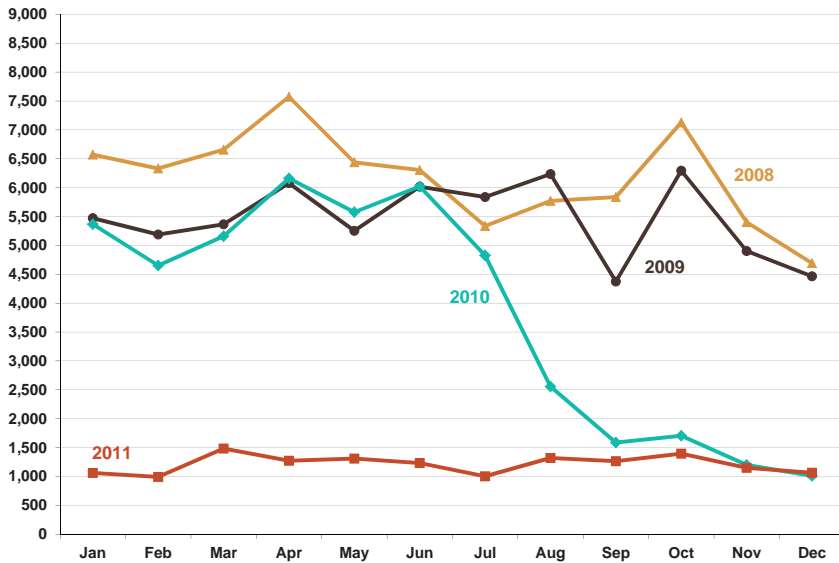
	2008	2009	2010	2011
Jan	4,306	6,452	3,520	3,431
Feb	4,381	3,628	3,885	3,837
Mar	4,693	4,043	4,569	4,383
Apr	5,154	4,359	3,990	3,899
May	4,865	3,790	4,136	3,768
Jun	4,778	4,313	4,600	3,979
Jul	8,742	2,305	4,477	3,290
Aug	4,316	3,347	4,067	3,077
Sep	4,402	3,705	4,354	3,879
Oct	4,896	4,047	4,247	4,793
Nov	3,563	3,579	3,894	3,499
Dec	3,059	3,559	3,745	3,371
TOTAL	57,155	47,127	49,484	45,206

Data sources: U.S. Customs & Border Protection

Data compiled by: Whatcom Council of Governments

LYNDEN/ALDERGROVE TRUCK VOLUMES, 2008-2011

NORTHBOUND



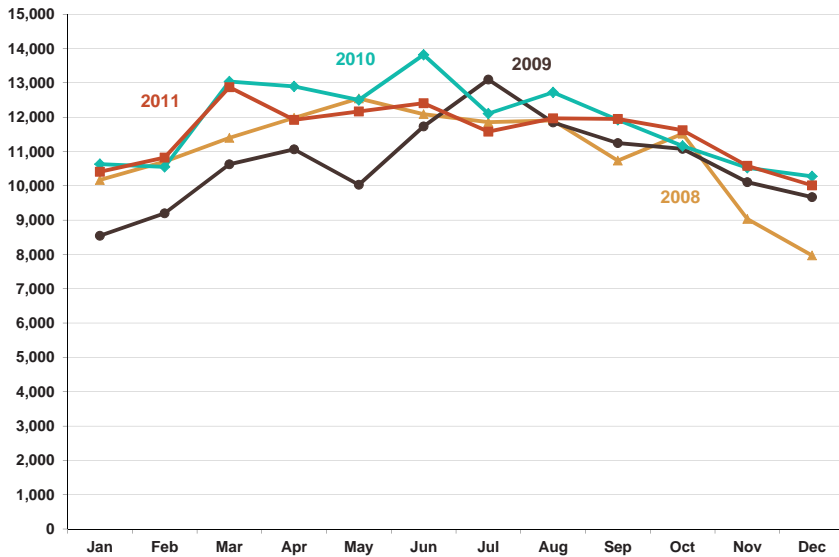
	2008	2009	2010	2011
Jan	6,572	5,470	5,366	1,060
Feb	6,332	5,188	4,652	992
Mar	6,656	5,365	5,159	1,481
Apr	7,573	6,078	6,159	1,271
May	6,438	5,252	5,576	1,310
Jun	6,304	6,016	6,022	1,231
Jul	5,336	5,836	4,826	1,002
Aug	5,770	6,236	2,556	1,319
Sep	5,836	4,375	1,587	1,264
Oct	7,129	6,293	1,704	1,394
Nov	5,402	4,902	1,199	1,149
Dec	4,692	4,464	1,011	1,063
TOTAL	74,040	65,475	45,817	14,536

Data sources: Canada Border Services Agency

Data compiled by: Whatcom Council of Governments

SUMAS/ABB-HUNTINGDON TRUCK VOLUMES, 2008-2011

SOUTHBOUND



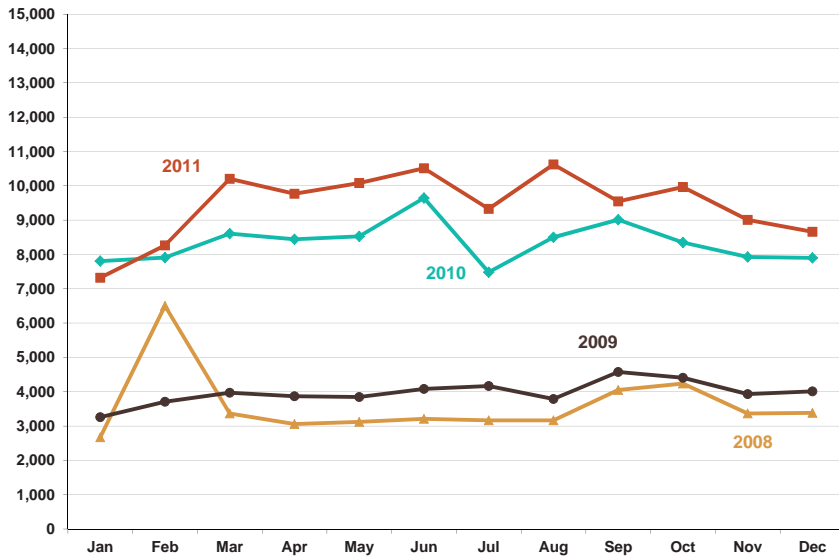
	2008	2009	2010	2011
Jan	10,168	8,545	10,632	10,410
Feb	10,703	9,201	10,550	10,822
Mar	11,399	10,629	13,037	12,876
Apr	11,981	11,064	12,895	11,922
May	12,546	10,029	12,500	12,166
Jun	12,089	11,729	13,817	12,408
Jul	11,854	13,095	12,106	11,581
Aug	11,904	11,847	12,721	11,966
Sep	10,734	11,247	11,923	11,951
Oct	11,517	11,077	11,161	11,621
Nov	9,034	10,107	10,524	10,584
Dec	7,969	9,669	10,277	10,012
TOTAL	131,898	128,239	142,143	138,319

Data sources: U.S. Customs & Border Protection

Data compiled by: Whatcom Council of Governments

SUMAS/ABB-HUNTINGDON TRUCK VOLUMES, 2008-2011

NORTHBOUND



	2008	2009	2010	2011
Jan	2,669	3,257	7,805	7,321
Feb	6,500	3,706	7,908	8,266
Mar	3,363	3,972	8,605	10,203
Apr	3,060	3,866	8,443	9,768
May	3,120	3,845	8,527	10,081
Jun	3,209	4,082	9,643	10,512
Jul	3,165	4,164	7,480	9,330
Aug	3,165	3,786	8,501	10,624
Sep	4,050	4,577	9,014	9,548
Oct	4,236	4,405	8,350	9,964
Nov	3,365	3,929	7,926	9,008
Dec	3,384	4,012	7,901	8,661
TOTAL	43,286	47,601	100,103	113,286

Data sources: Canada Border Services Agency

Data compiled by: Whatcom Council of Governments