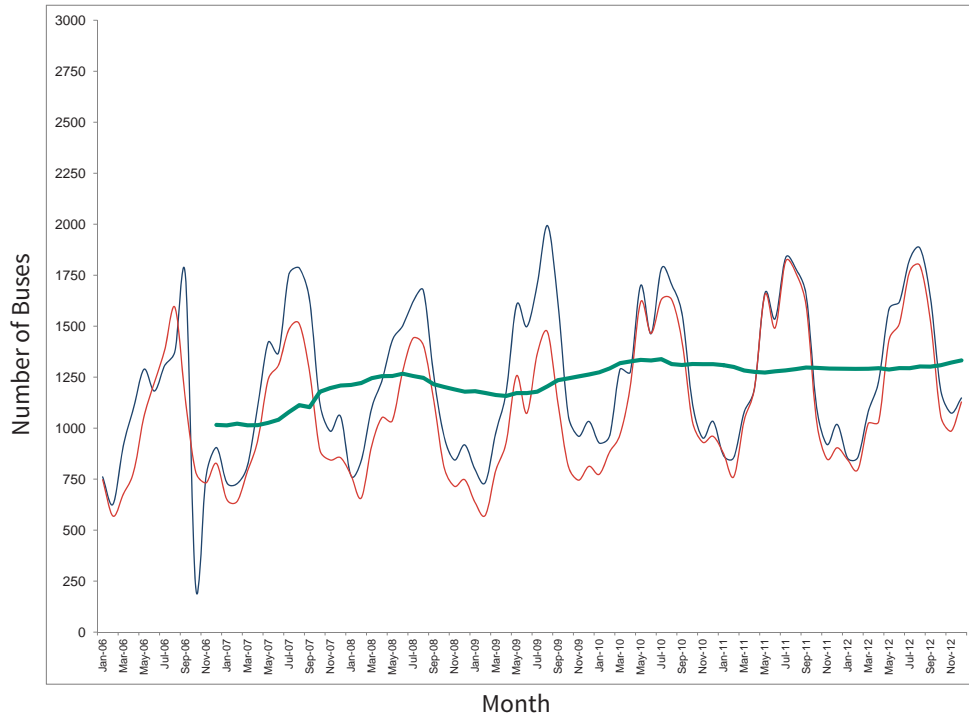


## PACIFIC HIGHWAY BUS VOLUMES

### BY MONTH, 2006-2012



### BY YEAR, 2006-2012

Annual Bus Volume		
	Northbound	Southbound
2006	11,516	12,195
2007	12,433	14,510
2008	11,964	14,145
2009	11,594	15,159
2010	14,526	15,768
2011	14,979	15,502
2012	14,907	15,988

- Pacific Highway is the **third busiest bus crossing on the northern border**.
- Average bus volume at Pacific Highway is **up 30 percent** since 2006.
- Southbound bus volume is **5 percent higher** than it was ten years ago in 2002, when it was 15,184.

**Data sources:** U.S. Bureau of Transportation Statistics, U.S. Customs & Border Protection, Canada Border Services Agency

**Data compiled by:** Whatcom Council of Governments