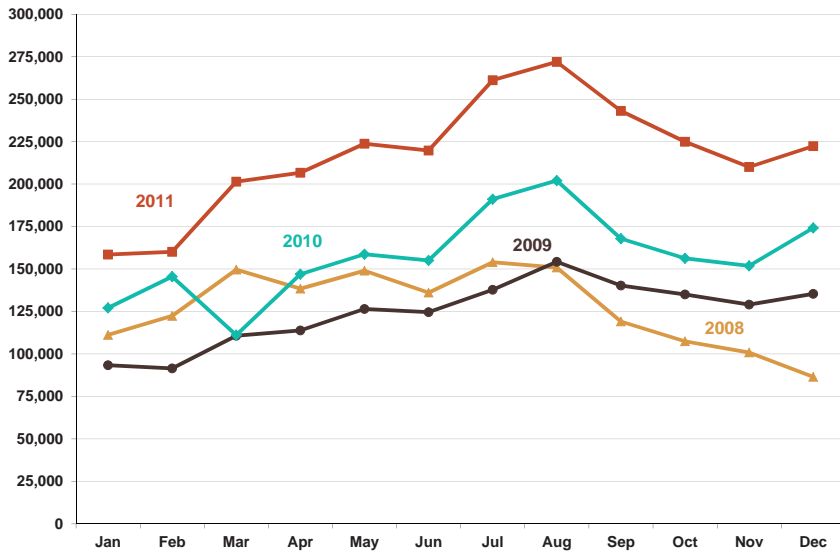


PEACE ARCH / DOUGLAS AUTO VOLUMES, 2008-2011

SOUTHBOUND



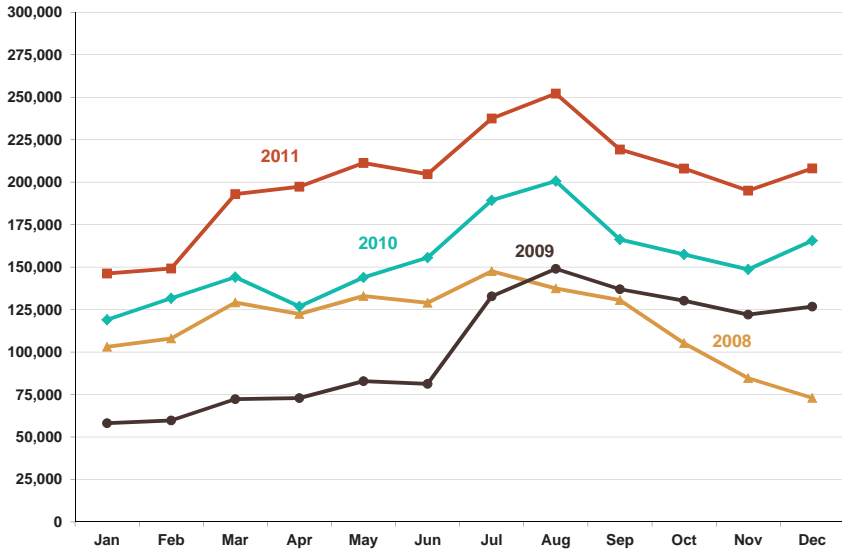
	2008	2009	2010	2011
Jan	111,168	93,367	127,082	158,480
Feb	122,356	91,536	145,546	160,108
Mar	149,641	110,718	111,091	201,376
Apr	138,398	113,843	146,911	206,648
May	148,997	126,488	158,687	223,771
Jun	136,133	124,641	155,042	219,779
Jul	154,000	137,792	191,078	261,142
Aug	150,851	154,259	202,055	271,895
Sep	119,121	140,313	167,869	243,041
Oct	107,446	135,014	156,341	224,909
Nov	100,856	129,059	151,882	210,090
Dec	86,479	135,405	174,149	222,343
TOTAL	1,525,446	1,492,435	1,887,733	2,603,582

Data sources: U.S. Customs & Border Protection

Data compiled by: Whatcom Council of Governments

PEACE ARCH / DOUGLAS AUTO VOLUMES, 2008-2011

NORTHBOUND



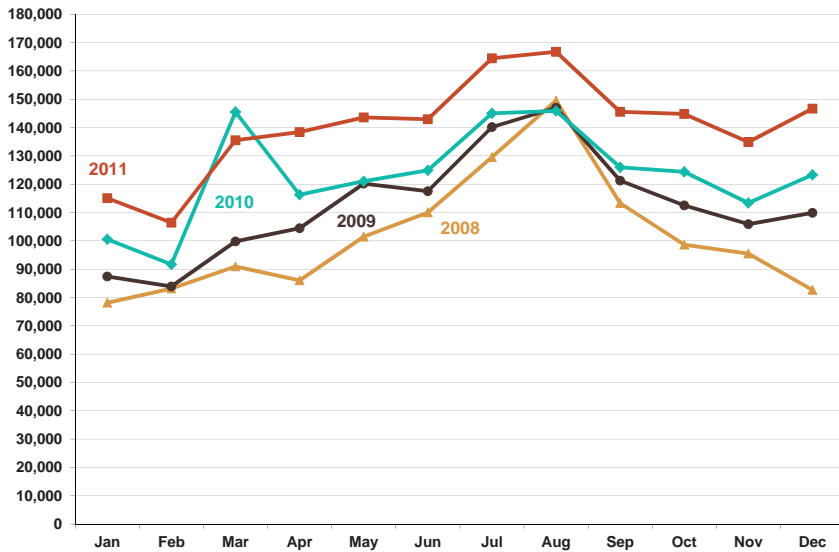
	2008	2009	2010	2011
Jan	103,116	58,134	119,050	146,257
Feb	107,963	59,694	131,630	149,172
Mar	129,179	72,288	144,137	193,005
Apr	122,418	72,906	126,871	197,351
May	132,943	82,891	143,933	211,283
Jun	128,936	81,250	155,611	204,708
Jul	147,618	132,773	189,280	237,450
Aug	137,409	149,029	200,576	252,191
Sep	130,539	137,001	166,244	219,231
Oct	105,234	130,216	157,472	207,995
Nov	84,693	122,040	148,630	195,044
Dec	72,951	126,792	165,571	208,089
TOTAL	1,402,999	1,225,014	1,849,005	2,421,776

Data sources: Canada Border Services Agency

Data compiled by: Whatcom Council of Governments

PACIFIC HIGHWAY AUTO VOLUMES, 2008-2011

SOUTHBOUND



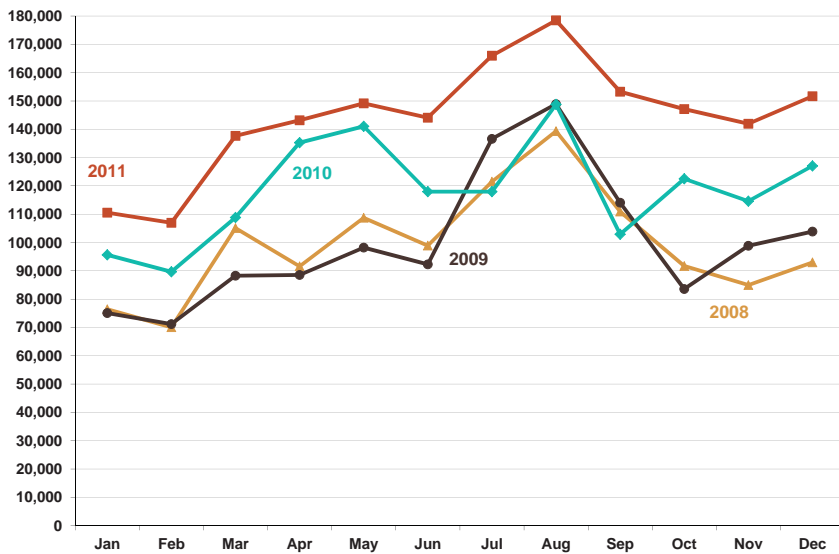
	2008	2009	2010	2011
Jan	78,141	87,403	100,558	115,059
Feb	83,137	83,912	91,690	106,450
Mar	90,941	99,833	145,545	135,548
Apr	86,030	104,469	116,321	138,432
May	101,457	120,222	121,054	143,605
Jun	110,037	117,528	124,891	142,983
Jul	129,531	140,176	145,025	164,501
Aug	149,523	147,021	145,886	166,770
Sep	113,312	121,258	125,993	145,574
Oct	98,644	112,530	124,389	144,851
Nov	95,511	105,913	113,366	134,877
Dec	82,669	109,931	123,303	146,692
TOTAL	1,218,933	1,350,196	1,478,021	1,685,342

Data sources: U.S. Customs & Border Protection

Data compiled by: Whatcom Council of Governments

PACIFIC HIGHWAY AUTO VOLUMES, 2008-2011

NORTHBOUND



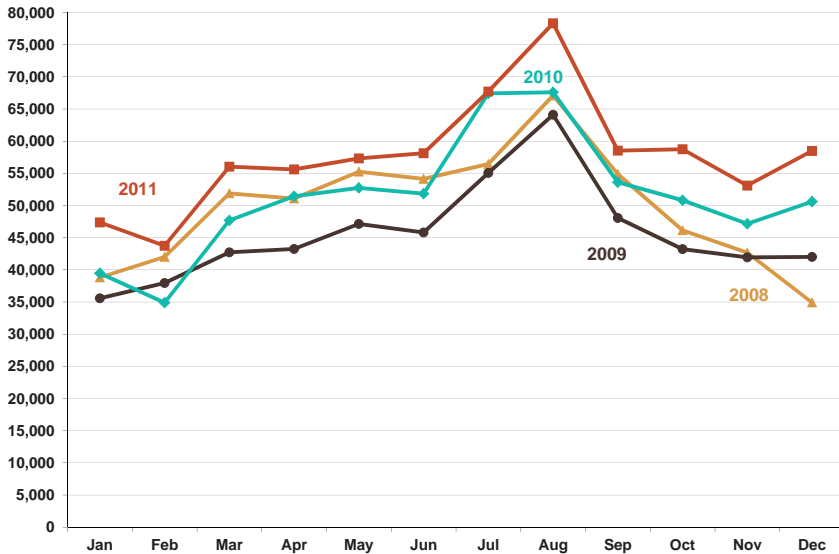
	2008	2009	2010	2011
Jan	76,436	75,110	95,638	110,520
Feb	70,065	71,184	89,661	106,953
Mar	105,115	88,282	108,811	137,657
Apr	91,603	88,520	135,245	143,169
May	108,725	98,235	141,040	149,175
Jun	98,880	92,296	117,984	144,067
Jul	121,478	136,599	117,984	165,995
Aug	139,329	148,911	148,789	178,483
Sep	110,926	114,048	102,932	153,291
Oct	91,674	83,559	122,515	147,128
Nov	84,989	98,846	114,609	141,951
Dec	92,970	103,856	127,071	151,662
TOTAL	1,192,190	1,199,446	1,422,279	1,730,051

Data sources: Canada Border Services Agency

Data compiled by: Whatcom Council of Governments

LYNDEN/ALDERGROVE AUTO VOLUMES, 2008-2011

SOUTHBOUND



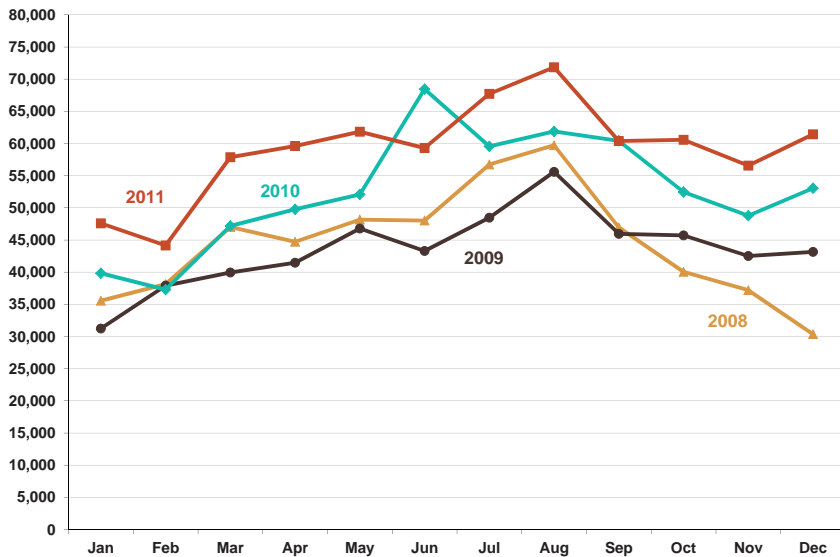
	2008	2009	2010	2011
Jan	38,796	35,584	39,464	47,364
Feb	42,005	37,954	34,888	43,738
Mar	51,883	42,724	47,694	56,044
Apr	51,088	43,253	51,440	55,609
May	55,257	47,129	52,746	57,315
Jun	54,130	45,806	51,848	58,116
Jul	56,430	55,065	67,439	67,710
Aug	67,103	64,117	67,592	78,328
Sep	54,875	48,061	53,620	58,525
Oct	46,147	43,211	50,824	58,749
Nov	42,687	41,931	47,156	53,088
Dec	34,905	42,015	50,607	58,482
TOTAL	595,306	546,850	615,318	693,068

Data sources: U.S. Customs & Border Protection

Data compiled by: Whatcom Council of Governments

LYNDEN/ALDERGROVE AUTO VOLUMES, 2008-2011

NORTHBOUND



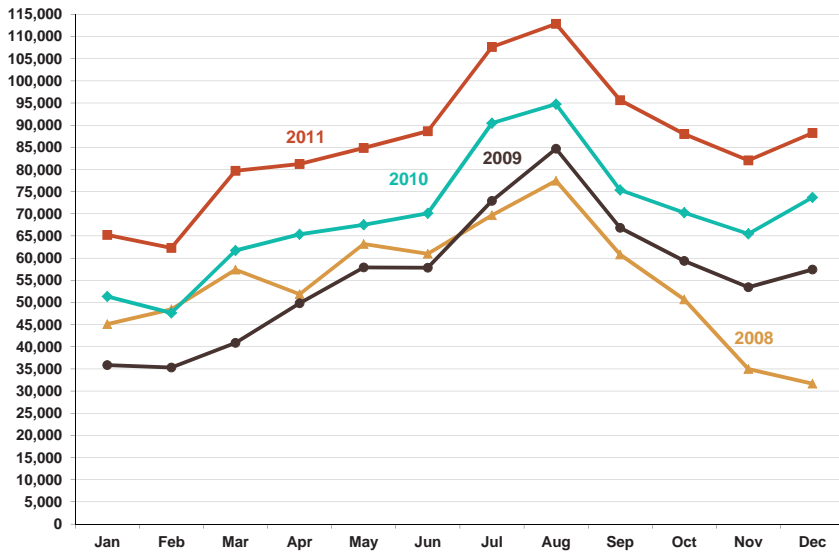
	2008	2009	2010	2011
Jan	35,551	31,225	39,824	47,581
Feb	38,135	37,903	37,290	44,157
Mar	47,022	39,955	47,194	57,873
Apr	44,716	41,472	49,782	59,607
May	48,157	46,779	52,082	61,819
Jun	48,013	43,302	68,444	59,279
Jul	56,736	48,473	59,544	67,716
Aug	59,710	55,583	61,868	71,852
Sep	46,944	45,940	60,412	60,377
Oct	40,038	45,716	52,466	60,581
Nov	37,196	42,515	48,778	56,552
Dec	30,347	43,145	53,056	61,435
TOTAL	532,565	522,008	630,740	708,829

Data sources: Canada Border Services Agency

Data compiled by: Whatcom Council of Governments

SUMAS/ABB-HUNTINGDON AUTO VOLUMES, 2008-2011

SOUTHBOUND



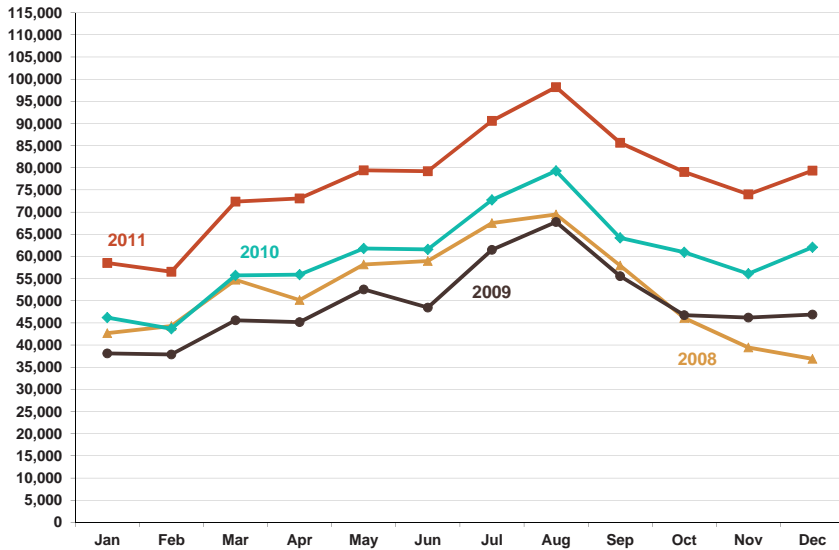
	2008	2009	2010	2011
Jan	45,097	35,861	51,356	65,252
Feb	48,457	35,326	47,635	62,318
Mar	57,405	40,873	61,712	79,690
Apr	51,870	49,825	65,377	81,228
May	63,176	57,891	67,506	84,847
Jun	60,974	57,819	70,102	88,656
Jul	69,671	72,907	90,461	107,632
Aug	77,461	84,666	94,736	112,854
Sep	60,791	66,845	75,355	95,621
Oct	50,685	59,384	70,237	88,001
Nov	34,977	53,427	65,478	82,064
Dec	31,657	57,438	73,698	88,216
TOTAL	652,221	672,262	833,653	1,036,379

Data sources: U.S. Customs & Border Protection

Data compiled by: Whatcom Council of Governments

SUMAS/ABB-HUNTINGDON AUTO VOLUMES, 2008-2011

NORTHBOUND



	2008	2009	2010	2011
Jan	42,673	38,109	46,195	58,527
Feb	44,288	37,862	43,667	56,535
Mar	54,745	45,595	55,723	72,360
Apr	50,162	45,190	55,881	73,095
May	58,166	52,537	61,774	79,439
Jun	58,972	48,445	61,575	79,223
Jul	67,516	61,491	72,752	90,573
Aug	69,452	67,758	79,306	98,189
Sep	57,949	55,550	64,177	85,647
Oct	46,114	46,734	60,937	79,058
Nov	39,436	46,214	56,097	74,019
Dec	36,874	46,866	62,077	79,354
TOTAL	626,347	592,351	720,161	926,019

Data sources: Canada Border Services Agency

Data compiled by: Whatcom Council of Governments