

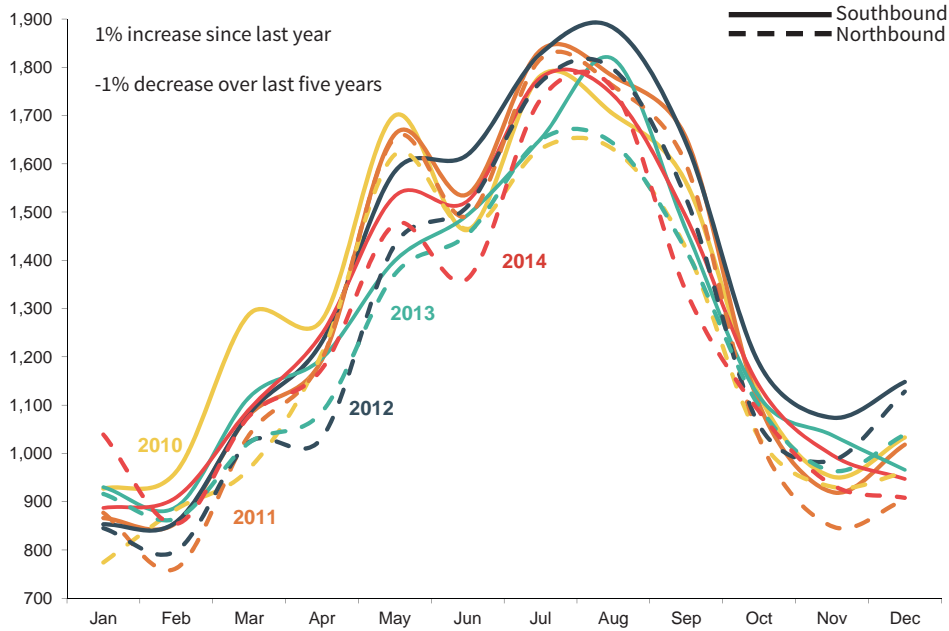
CASCADE GATEWAY BORDER DATA

From the International Mobility & Trade Corridor (IMTC) Program

More info at: www.theimtc.com/data; data compiled by the Whatcom Council of Governments

PACIFIC HIGHWAY BUS VOLUMES

2010 - 2014



| | 2010 | 2011 | 2012 | 2013 | 2014 | |
|--------------|---------------|---------------|---------------|---------------|---------------|-------|
| Northbound | Jan | 774 | 877 | 845 | 916 | 1,039 |
| | Feb | 884 | 762 | 798 | 865 | 854 |
| | Mar | 968 | 1,038 | 1,023 | 1,022 | 1,077 |
| | Apr | 1,207 | 1,195 | 1,032 | 1,086 | 1,175 |
| | May | 1,619 | 1,654 | 1,432 | 1,371 | 1,475 |
| | Jun | 1,465 | 1,492 | 1,512 | 1,454 | 1,362 |
| | Jul | 1,631 | 1,817 | 1,769 | 1,650 | 1,733 |
| | Aug | 1,630 | 1,761 | 1,796 | 1,642 | 1,755 |
| | Sep | 1,424 | 1,598 | 1,528 | 1,420 | 1,335 |
| | Oct | 1,033 | 1,032 | 1,059 | 1,098 | 1,087 |
| | Nov | 931 | 849 | 985 | 964 | 935 |
| | Dec | 960 | 904 | 1,128 | 1,039 | 908 |
| TOTAL | 14,526 | 14,979 | 14,907 | 14,527 | 14,735 | |
| Southbound | Jan | 927 | 866 | 853 | 930 | 887 |
| | Feb | 962 | 856 | 858 | 889 | 909 |
| | Mar | 1,288 | 1,079 | 1,082 | 1,116 | 1,091 |
| | Apr | 1,276 | 1,194 | 1,231 | 1,197 | 1,248 |
| | May | 1,700 | 1,661 | 1,584 | 1,399 | 1,533 |
| | Jun | 1,463 | 1,537 | 1,619 | 1,494 | 1,523 |
| | Jul | 1,782 | 1,835 | 1,828 | 1,651 | 1,778 |
| | Aug | 1,703 | 1,781 | 1,882 | 1,817 | 1,742 |
| | Sep | 1,561 | 1,653 | 1,643 | 1,463 | 1,489 |
| | Oct | 1,121 | 1,102 | 1,186 | 1,118 | 1,140 |
| | Nov | 952 | 920 | 1,074 | 1,038 | 997 |
| | Dec | 1,033 | 1,018 | 1,148 | 966 | 947 |
| TOTAL | 15,768 | 15,502 | 15,988 | 15,078 | 15,284 | |

Data sources: U.S. Customs & Border Protection, Canada Border Services Agency
Data compiled by: Whatcom Council of Governments

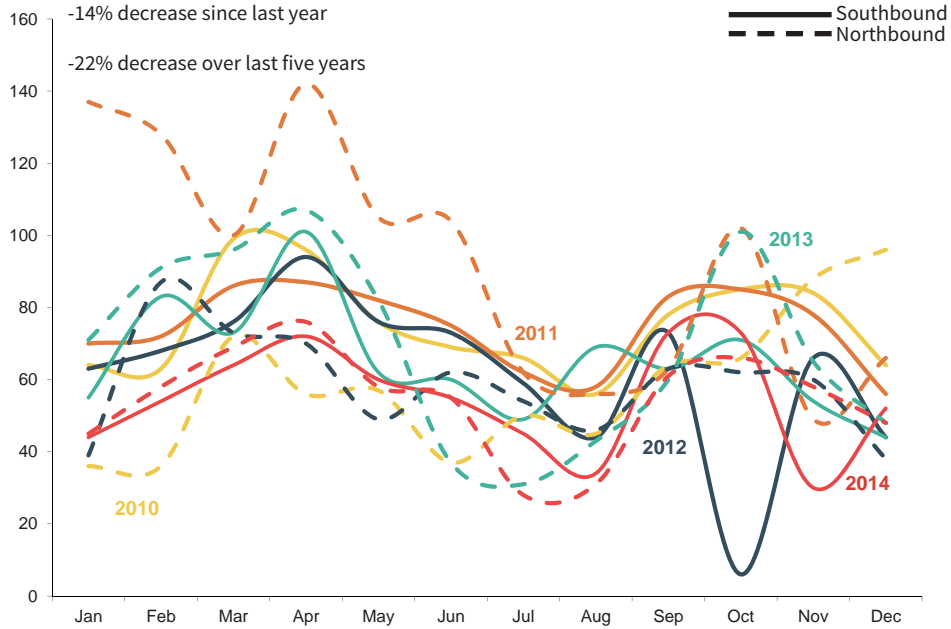
CASCADE GATEWAY BORDER DATA

From the International Mobility & Trade Corridor (IMTC) Program

More info at: www.theimtc.com/data; data compiled by the Whatcom Council of Governments

SUMAS/ABBOTSFORD-HUNTINGDON

BUS VOLUMES, 2010 - 2014



| | 2010 | 2011 | 2012 | 2013 | 2014 | |
|--------------|------------|--------------|------------|------------|------------|----|
| Northbound | Jan | 36 | 137 | 39 | 71 | 45 |
| | Feb | 36 | 128 | 87 | 91 | 58 |
| | Mar | 72 | 100 | 73 | 96 | 69 |
| | Apr | 56 | 142 | 70 | 107 | 76 |
| | May | 57 | 105 | 49 | 82 | 58 |
| | Jun | 37 | 104 | 62 | 37 | 55 |
| | Jul | 50 | 62 | 54 | 31 | 28 |
| | Aug | 45 | 56 | 46 | 43 | 31 |
| | Sep | 64 | 63 | 63 | 60 | 61 |
| | Oct | 66 | 102 | 62 | 101 | 66 |
| | Nov | 88 | 49 | 60 | 65 | 58 |
| | Dec | 96 | 66 | 38 | 48 | 48 |
| TOTAL | 703 | 1,114 | 703 | 832 | 653 | |

| | 2010 | 2011 | 2012 | 2013 | 2014 | |
|--------------|------------|------------|------------|------------|------------|----|
| Southbound | Jan | 64 | 70 | 63 | 55 | 44 |
| | Feb | 63 | 72 | 68 | 83 | 54 |
| | Mar | 99 | 86 | 76 | 73 | 64 |
| | Apr | 96 | 87 | 94 | 101 | 72 |
| | May | 76 | 82 | 76 | 62 | 60 |
| | Jun | 69 | 75 | 73 | 60 | 55 |
| | Jul | 66 | 62 | 59 | 49 | 45 |
| | Aug | 56 | 58 | 44 | 69 | 34 |
| | Sep | 78 | 83 | 73 | 63 | 73 |
| | Oct | 85 | 85 | 6 | 71 | 73 |
| | Nov | 84 | 78 | 66 | 54 | 30 |
| | Dec | 64 | 56 | 44 | 44 | 52 |
| TOTAL | 900 | 894 | 742 | 784 | 656 | |

Data sources: U.S. Customs & Border Protection, Canada Border Services Agency
Data compiled by: Whatcom Council of Governments