

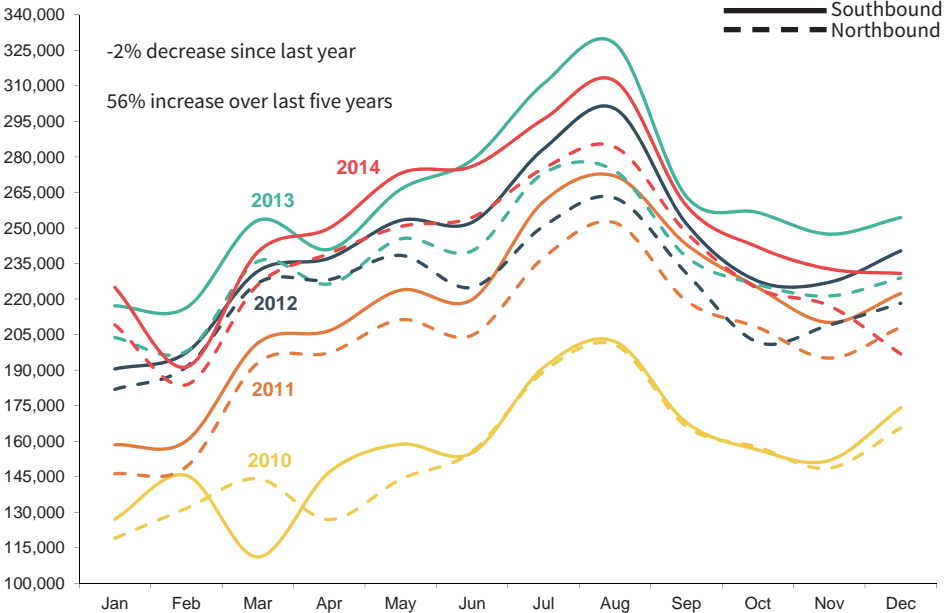
CASCADE GATEWAY BORDER DATA

From the International Mobility & Trade Corridor (IMTC) Program

More info at: www.theimtc.com/data; data compiled by the Whatcom Council of Governments

PEACE ARCH / DOUGLAS AUTO VOLUMES

2010 - 2014



	2010		2011		2012		2013		2014	
	Cars	NEXUS	Cars	NEXUS	Cars	NEXUS	Cars	NEXUS	Cars	NEXUS
Jan	119,050	31%	146,257	27%	181,854	35%	203,713	40%	209,140	45%
Feb	131,630	24%	149,172	31%	191,327	36%	197,914	40%	183,810	46%
Mar	144,137	29%	193,005	30%	226,694	34%	235,844	39%	225,937	45%
Apr	126,871	24%	197,351	31%	228,179	35%	226,341	41%	239,202	46%
May	143,933	26%	211,283	32%	238,423	36%	245,396	41%	250,609	47%
Jun	155,611	30%	204,708	31%	224,923	37%	240,306	41%	254,450	46%
Jul	189,280	28%	237,450	29%	250,709	35%	273,063	39%	275,152	44%
Aug	200,576	28%	252,191	30%	262,635	34%	274,079	38%	284,177	43%
Sep	166,244	30%	219,231	32%	230,896	37%	237,880	43%	248,046	46%
Oct	157,472	32%	207,995	34%	201,780	39%	226,171	45%	224,427	48%
Nov	148,630	30%	195,044	34%	209,014	38%	221,286	43%	217,137	48%
Dec	165,571	29%	208,089	33%	218,233	38%	228,899	44%	196,820	49%
TOTAL	1,849,005		2,421,776		2,664,667		2,810,892		2,808,907	46%

	2010		2011		2012		2013		2014	
	Cars	NEXUS	Cars	NEXUS	Cars	NEXUS	Cars	NEXUS	Cars	NEXUS
Jan	127,082	33%	158,480	27%	190,489	31%	217,137	34%	224,885	37%
Feb	145,546	26%	160,108	21%	197,403	32%	216,341	34%	191,311	40%
Mar	111,091	33%	201,376	29%	231,706	32%	253,175	33%	239,797	38%
Apr	146,911	24%	206,648	28%	237,224	31%	240,945	34%	249,926	39%
May	158,687	22%	223,771	27%	253,204	31%	266,314	33%	273,028	38%
Jun	155,042	28%	219,779	26%	252,357	30%	278,690	33%	275,975	36%
Jul	191,078		261,142	22%	283,343	28%	310,870	30%	295,886	34%
Aug	202,055		271,895	24%	300,361	26%	327,810	30%	312,039	35%
Sep	167,869		243,041	26%	251,771	31%	263,272	34%	259,412	37%
Oct	156,341		224,909	29%	227,581	33%	256,519	36%	241,945	38%
Nov	151,882		210,090	31%	227,057	32%	247,402	37%	232,655	39%
Dec	174,149		222,343	30%	240,365	32%	254,411	36%	230,770	40%
TOTAL	1,887,733		2,603,582		2,892,861		3,132,886		3,027,629	38%

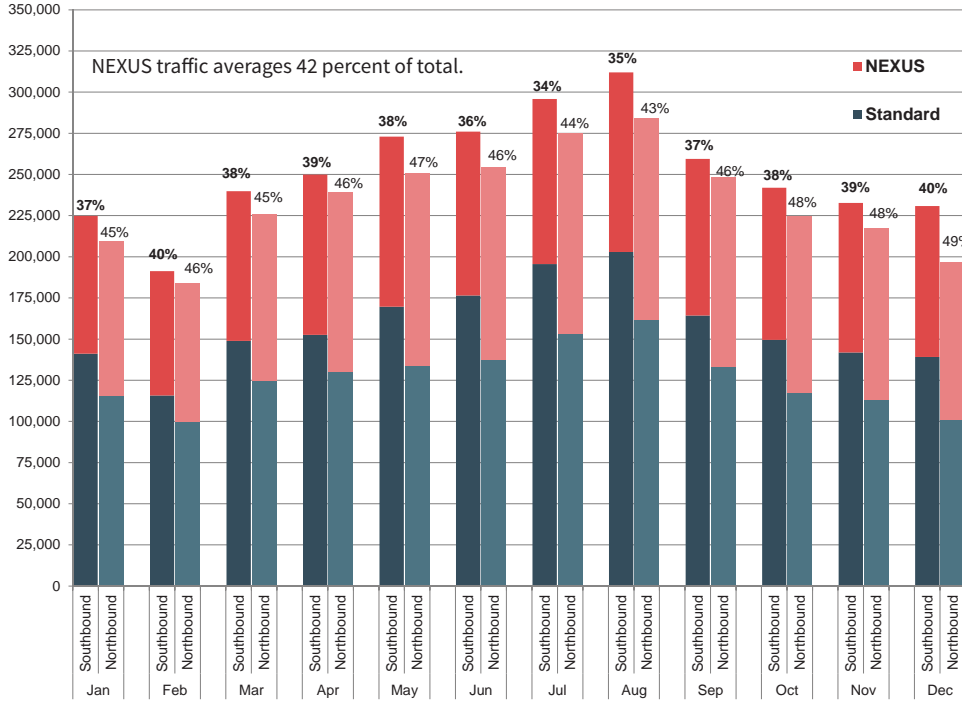
Data sources: U.S. Customs & Border Protection, Canada Border Services Agency
Data compiled by: Whatcom Council of Governments

CASCADE GATEWAY BORDER DATA

From the International Mobility & Trade Corridor (IMTC) Program

More info at: www.theimtc.com/data; data compiled by the Whatcom Council of Governments

PEACE ARCH / DOUGLAS STANDARD VEHICLES VS. NEXUS, 2014



	Standard	NEXUS
Jan	115,394	93,746
Feb	99,572	84,238
Mar	124,432	101,505
Apr	130,229	108,973
May	134,025	116,584
Jun	137,795	116,655
Jul	153,600	121,552
Aug	161,653	122,524
Sep	133,060	114,986
Oct	117,186	107,241
Nov	113,089	104,048
Dec	101,150	95,670

	Standard	NEXUS
Jan	141,115	83,770
Feb	115,719	75,592
Mar	148,908	90,889
Apr	152,528	97,398
May	169,629	103,399
Jun	176,505	99,470
Jul	195,572	100,314
Aug	202,892	109,147
Sep	164,336	95,076
Oct	149,495	92,450
Nov	141,839	90,816
Dec	139,149	91,621

Data sources: U.S. Customs & Border Protection, Canada Border Services Agency
 Data compiled by: Whatcom Council of Governments

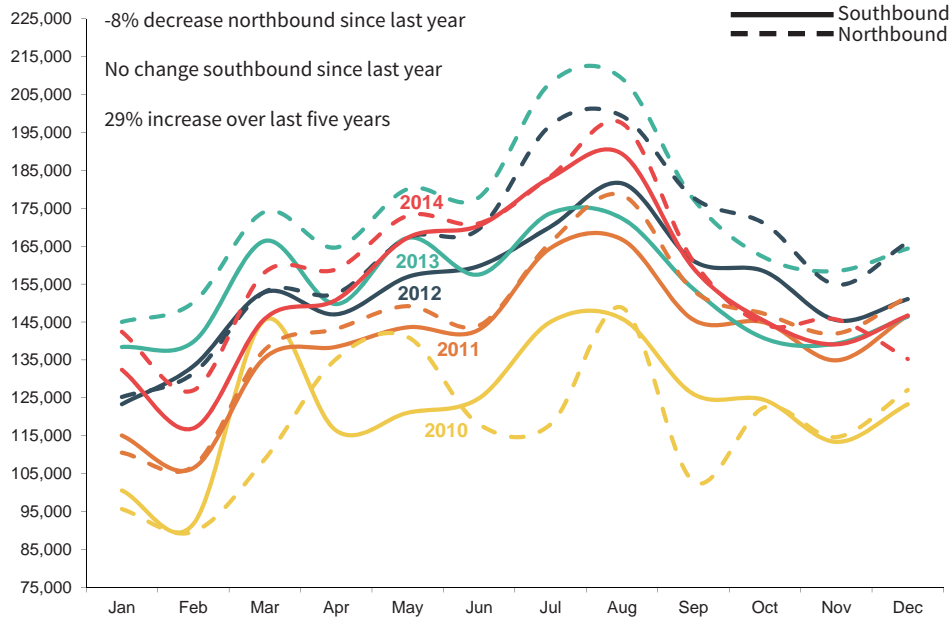
CASCADE GATEWAY BORDER DATA

From the International Mobility & Trade Corridor (IMTC) Program

More info at: www.theimtc.com/data; data compiled by the Whatcom Council of Governments

PACIFIC HIGHWAY AUTO VOLUMES

2010 - 2014



	2010		2011		2012		2013		2014		
	Cars	NEXUS	Cars	NEXUS	Cars	NEXUS	Cars	NEXUS	Cars	NEXUS	
Northbound	Jan	95,638	16%	110,520	15%	125,212	26%	145,021	31%	142,397	37%
	Feb	89,661	16%	106,953	17%	131,447	27%	150,153	31%	126,966	37%
	Mar	108,811	16%	137,657	17%	152,956	27%	174,053	31%	158,083	36%
	Apr	135,245	23%	143,169	17%	152,499	28%	164,643	32%	158,927	38%
	May	141,040	21%	149,175	18%	167,224	27%	180,076	33%	173,041	38%
	Jun	117,984	17%	144,067	19%	169,539	27%	177,897	32%	171,017	38%
	Jul	117,984	17%	165,995	18%	196,861	25%	208,086	31%	183,423	37%
	Aug	148,789	14%	178,483	19%	199,358	25%	209,239	29%	197,445	34%
	Sep	102,932	19%	153,291	21%	177,818	26%	177,400	32%	160,990	40%
	Oct	122,515	16%	147,128	23%	170,898	28%	161,963	35%	144,302	41%
	Nov	114,609	16%	141,951	22%	154,878	28%	158,453	35%	145,660	40%
	Dec	127,071	16%	151,662	20%	166,003	28%	164,382	35%	135,238	41%
TOTAL	1,422,279		1,730,051		1,964,693		2,071,366		1,897,489		

	2010		2011		2012		2013		2014		
	Cars	NEXUS	Cars	NEXUS	Cars	NEXUS	Cars	NEXUS	Cars	NEXUS	
Southbound	Jan	100,558	17%	115,059	17%	123,314	25%	138,407	33%	132,372	37%
	Feb	91,690	16%	106,450	21%	133,348	25%	139,764	32%	116,944	37%
	Mar	145,545	11%	135,548	21%	152,866	26%	166,380	31%	145,817	36%
	Apr	116,321	16%	138,432	20%	147,012	26%	149,726	34%	150,834	37%
	May	121,054	16%	143,605	20%	156,890	27%	167,197	33%	167,233	37%
	Jun	124,891	15%	142,983	20%	159,768	28%	157,509	33%	170,404	36%
	Jul	145,025	13%	164,501	18%	170,129	27%	173,680	32%	183,054	35%
	Aug	145,886	15%	166,770	19%	181,573	26%	172,355	31%	189,372	32%
	Sep	125,993	17%	145,574	20%	161,134	27%	153,711	33%	159,207	37%
	Oct	124,389	18%	144,851	23%	158,304	31%	140,644	37%	145,215	39%
	Nov	113,366	17%	134,877	22%	145,487	31%	139,291	36%	139,091	39%
	Dec	123,303	17%	146,692	23%	151,019	31%	146,397	37%	146,675	38%
TOTAL	1,478,021		1,685,342		1,840,844		1,845,061		1,846,218		

Data sources: U.S. Customs & Border Protection, Canada Border Services Agency
 Data compiled by: Whatcom Council of Governments

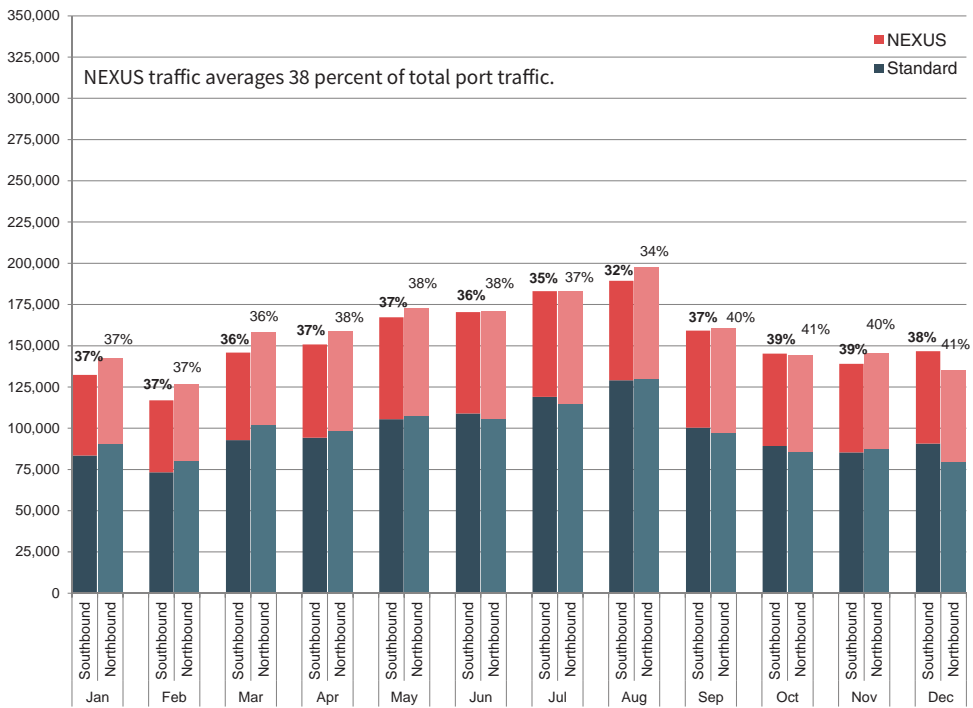
CASCADE GATEWAY BORDER DATA

From the International Mobility & Trade Corridor (IMTC) Program

More info at: www.theimtc.com/data; data compiled by the Whatcom Council of Governments

PACIFIC HIGHWAY STANDARD VS. NEXUS

2014



	Standard	NEXUS
Jan	90,374	52,023
Feb	80,535	46,431
Mar	101,776	56,307
Apr	98,743	60,184
May	107,535	65,506
Jun	105,784	65,233
Jul	115,035	68,388
Aug	129,781	67,664
Sep	97,386	63,604
Oct	85,523	58,779
Nov	87,855	57,805
Dec	80,062	55,176

	Standard	NEXUS
Jan	83,490	48,882
Feb	73,325	43,619
Mar	92,841	52,976
Apr	94,297	56,537
May	105,447	61,786
Jun	108,963	61,441
Jul	118,966	64,088
Aug	129,042	60,330
Sep	100,321	58,886
Oct	89,251	55,964
Nov	85,341	53,750
Dec	90,683	55,992

Data sources: U.S. Customs & Border Protection, Canada Border Services Agency
 Data compiled by: Whatcom Council of Governments

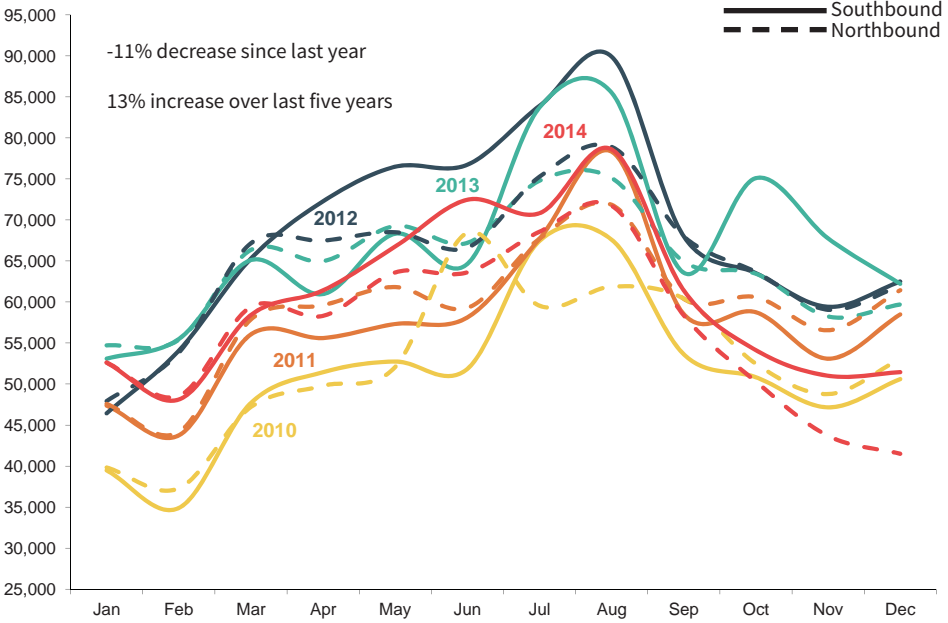
CASCADE GATEWAY BORDER DATA

From the International Mobility & Trade Corridor (IMTC) Program

More info at: www.theimtc.com/data; data compiled by the Whatcom Council of Governments

LYNDEN/ALDERGROVE AUTO VOLUMES

2010 - 2014



	2010	2011	2012	2013	2014
Jan	39,824	47,581	47,920	54,710	52,622
Feb	37,290	44,157	53,804	55,388	48,555
Mar	47,194	57,873	67,161	66,347	59,401
Apr	49,782	59,607	67,484	64,983	58,310
May	52,082	61,819	68,504	69,262	63,602
Jun	68,444	59,279	66,632	67,206	63,614
Jul	59,544	67,716	75,267	74,782	68,567
Aug	61,868	71,852	78,914	75,112	71,725
Sep	60,412	60,377	67,980	64,922	58,365
Oct	52,466	60,581	63,652	63,443	50,293
Nov	48,778	56,552	59,051	58,234	43,686
Dec	53,056	61,435	61,940	59,703	41,497
TOTAL	630,740	708,829	778,309	774,092	682,251

	2010	2011	2012	2013	2014
Jan	39,464	47,364	46,434	53,092	52,593
Feb	34,888	43,738	54,065	55,481	48,110
Mar	47,694	56,044	65,295	65,111	58,422
Apr	51,440	55,609	72,279	60,963	61,411
May	52,746	57,315	76,491	68,321	66,763
Jun	51,848	58,116	76,736	64,644	72,469
Jul	67,439	67,710	83,902	83,698	70,824
Aug	67,592	78,328	89,907	85,516	78,605
Sep	53,620	58,525	67,986	63,566	61,412
Oct	50,824	58,749	63,523	75,102	54,129
Nov	47,156	53,088	59,408	67,748	51,006
Dec	50,607	58,482	62,495	62,216	51,445
TOTAL	615,318	693,068	818,521	805,458	727,189

Data sources: U.S. Customs & Border Protection, Canada Border Services Agency
 Data compiled by: Whatcom Council of Governments

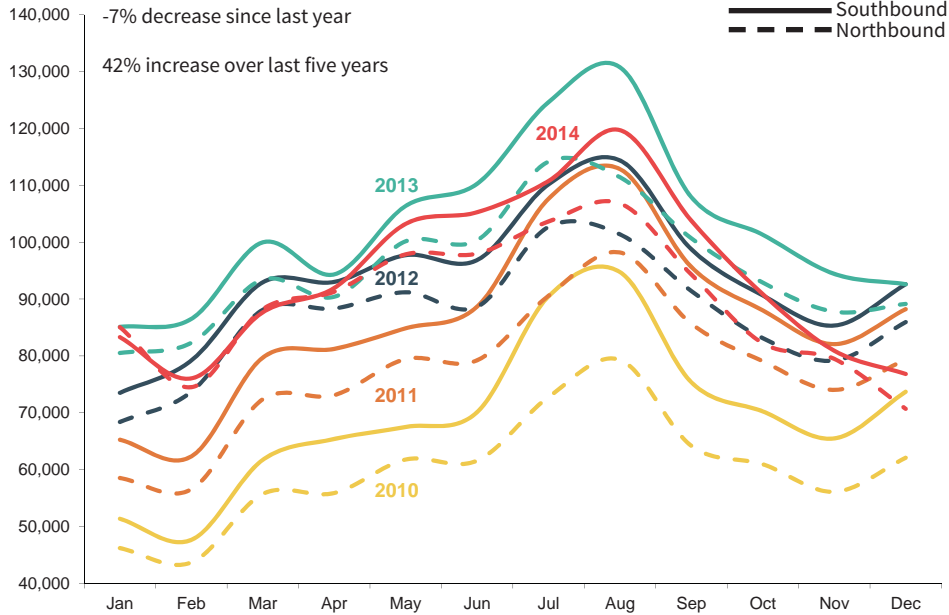
CASCADE GATEWAY BORDER DATA

From the International Mobility & Trade Corridor (IMTC) Program

More info at: www.theimtc.com/data; data compiled by the Whatcom Council of Governments

SUMAS/ABBOTSFORD-HUNTINGDON

AUTO VOLUMES, 2010 - 2014



	2010		2011		2012		2013		2014	
	Cars	NEXUS	Cars	NEXUS	Cars	NEXUS	Cars	NEXUS	Cars	NEXUS
Northbound	Jan	46,195	58,527	68,378	80,512	7%	85,055	13%		
	Feb	43,667	56,535	73,686	82,302	7%	74,497	14%		
	Mar	55,723	72,360	88,111	93,445	8%	88,225	14%		
	Apr	55,881	73,095	88,335	90,392	8%	91,283	14%		
	May	61,774	79,439	91,194	100,157	9%	97,855	15%		
	Jun	61,575	79,223	88,634	100,337	9%	97,990	15%		
	Jul	72,752	90,573	102,672	114,163	9%	103,639	15%		
	Aug	79,306	98,189	101,365	111,421	9%	106,808	14%		
	Sep	64,177	85,647	91,408	100,681	10%	94,307	17%		
	Oct	60,937	79,058	83,123	92,891	12%	82,227	18%		
	Nov	56,097	74,019	79,184	87,773	12%	79,465	18%		
	Dec	62,077	79,354	85,945	89,142	13%	70,692	19%		
TOTAL	720,161	926,019	1,042,035	1,143,216		1,072,043				
Southbound	Jan	51,356	65,252	73,503	85,096	2%	83,307	3%		
	Feb	47,635	62,318	79,179	86,507	2%	76,035	2%		
	Mar	61,712	79,690	92,941	99,973	2%	87,667	2%		
	Apr	65,377	81,228	93,005	94,330	3%	91,934	2%		
	May	67,506	84,847	97,720	106,365	1%	103,223	2%		
	Jun	70,102	88,656	96,847	110,266	2%	105,261	2%		
	Jul	90,461	107,632	110,171	124,622	2%	110,753	2%		
	Aug	94,736	112,854	114,377	130,769	2%	119,707	2%		
	Sep	75,355	95,621	98,750	107,913	2%	103,767	2%		
	Oct	70,237	88,001	90,626	101,309	2%	90,859	2%		
	Nov	65,478	82,064	85,324	94,427	2%	80,909	2%		
	Dec	73,698	88,216	92,607	92,607	2%	76,829	3%		
TOTAL	833,653	1,036,379	1,125,050	1,234,184		1,130,251				

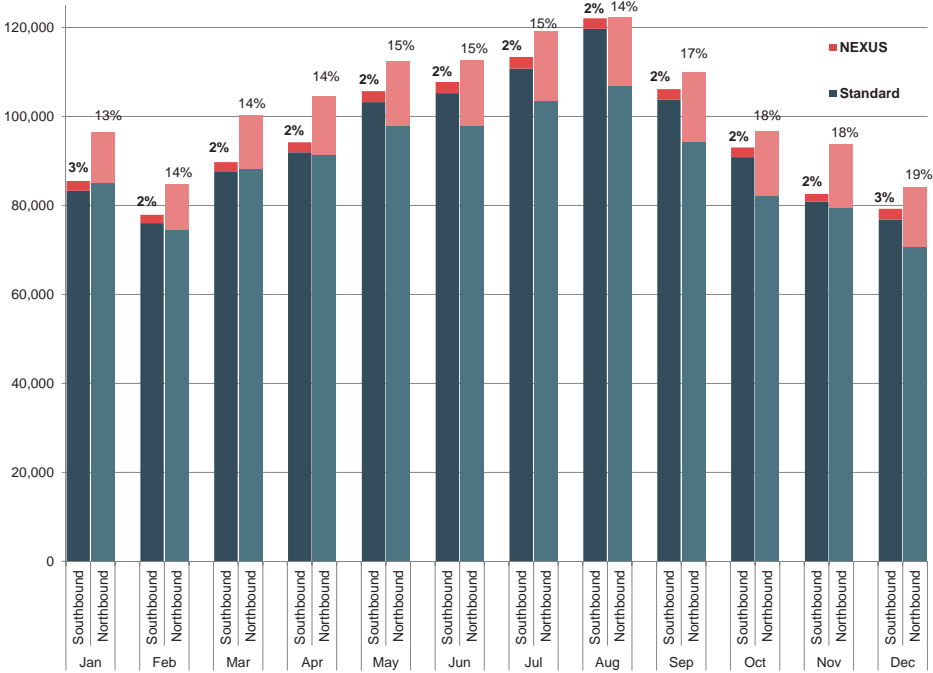
Data sources: U.S. Customs & Border Protection, Canada Border Services Agency
Data compiled by: Whatcom Council of Governments

CASCADE GATEWAY BORDER DATA

From the International Mobility & Trade Corridor (IMTC) Program

More info at: www.theimtc.com/data; data compiled by the Whatcom Council of Governments

SUMAS/ABBOTSFORD-HUNTINGDON STANDARD VS. NEXUS, 2014



NEXUS traffic averages 16 percent of total port traffic northbound, and 2 percent southbound. Note that low southbound NEXUS may be a combination of poor access to the lane southbound as well as the number of NEXUS vehicles counted as “Ready Lane” vehicles in the U.S. system.

	Standard	NEXUS		Standard	NEXUS		
Northbound	Jan	90,374	52,023	Southbound	Jan	83,490	48,882
	Feb	80,535	46,431		Feb	73,325	43,619
	Mar	101,776	56,307		Mar	92,841	52,976
	Apr	98,743	60,184		Apr	94,297	56,537
	May	107,535	65,506		May	105,447	61,786
	Jun	105,784	65,233		Jun	108,963	61,441
	Jul	115,035	68,388		Jul	118,966	64,088
	Aug	129,781	67,664		Aug	129,042	60,330
	Sep	97,386	63,604		Sep	100,321	58,886
	Oct	85,523	58,779		Oct	89,251	55,964
	Nov	87,855	57,805		Nov	85,341	53,750
	Dec	80,062	55,176		Dec	90,683	55,992

Data sources: U.S. Customs & Border Protection, Canada Border Services Agency
 Data compiled by: Whatcom Council of Governments

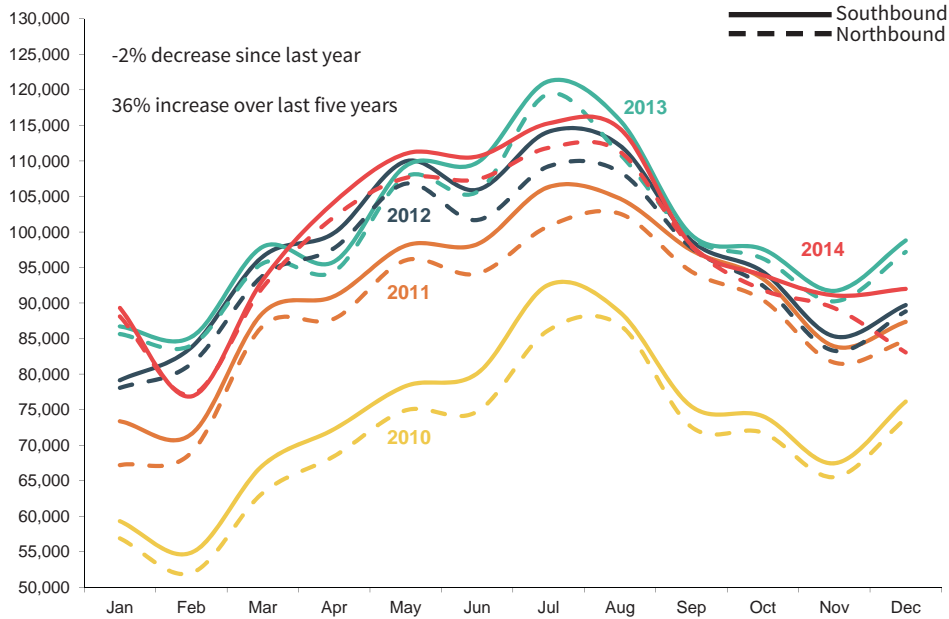
CASCADE GATEWAY BORDER DATA

From the International Mobility & Trade Corridor (IMTC) Program

More info at: www.theimtc.com/data; data compiled by the Whatcom Council of Governments

POINT ROBERTS/BOUNDARY BAY

AUTO VOLUMES, 2010 - 2014



	2010		2011		2012		2013		2014	
	Cars	NEXUS	Cars	NEXUS	Cars	NEXUS	Cars	NEXUS	Cars	NEXUS
Jan	56,893		67,198		78,058	35%	85,641	39%	88,115	41%
Feb	52,018		68,950		81,448	34%	84,041	38%	77,108	42%
Mar	63,276		86,745		93,830	33%	95,578	38%	92,191	41%
Apr	68,456		87,787		97,732	33%	94,446	39%	102,120	41%
May	74,901		96,012		106,792	35%	107,763	39%	107,603	43%
Jun	74,714		94,127		101,682	38%	105,627	41%	107,400	44%
Jul	86,186		100,807		109,235	38%	119,417	40%	111,840	45%
Aug	86,880		102,567		108,433	38%	110,942	41%	111,285	45%
Sep	72,570		94,438		97,769	39%	99,150	40%	97,968	44%
Oct	71,751		90,434		92,440	38%	96,260	41%	91,850	44%
Nov	65,508		81,619		83,276	39%	90,244	41%	89,285	45%
Dec	73,742		84,695		88,820	39%	97,189	40%	83,054	44%
TOTAL	846,895		1,055,379		1,139,515		1,186,298		1,159,819	519%

	2010		2011		2012		2013		2014	
	Cars	NEXUS	Cars	NEXUS	Cars	NEXUS	Cars	NEXUS	Cars	NEXUS
Jan	59,310		73,367		79,138	33%	86,712	33%	89,312	36%
Feb	54,876		71,555		83,763	33%	85,219	33%	76,865	37%
Mar	67,154		88,600		96,533	32%	97,906	32%	93,230	37%
Apr	72,258		90,956		99,877	33%	95,827	33%	104,202	36%
May	78,312		98,074		109,939	12%	109,275	12%	111,012	38%
Jun	80,082		98,262		105,927	31%	109,742	31%	110,608	37%
Jul	92,559		106,319		114,101	30%	121,202	30%	115,277	39%
Aug	88,718		104,684		112,146	32%	115,718	32%	114,536	38%
Sep	75,454		97,427		98,787	33%	99,586	33%	98,143	38%
Oct	74,080		93,407		94,402	34%	97,582	34%	93,930	38%
Nov	67,445		83,903		85,303	35%	91,709	35%	91,073	40%
Dec	76,135		87,356		89,716	36%	98,799	36%	91,995	41%

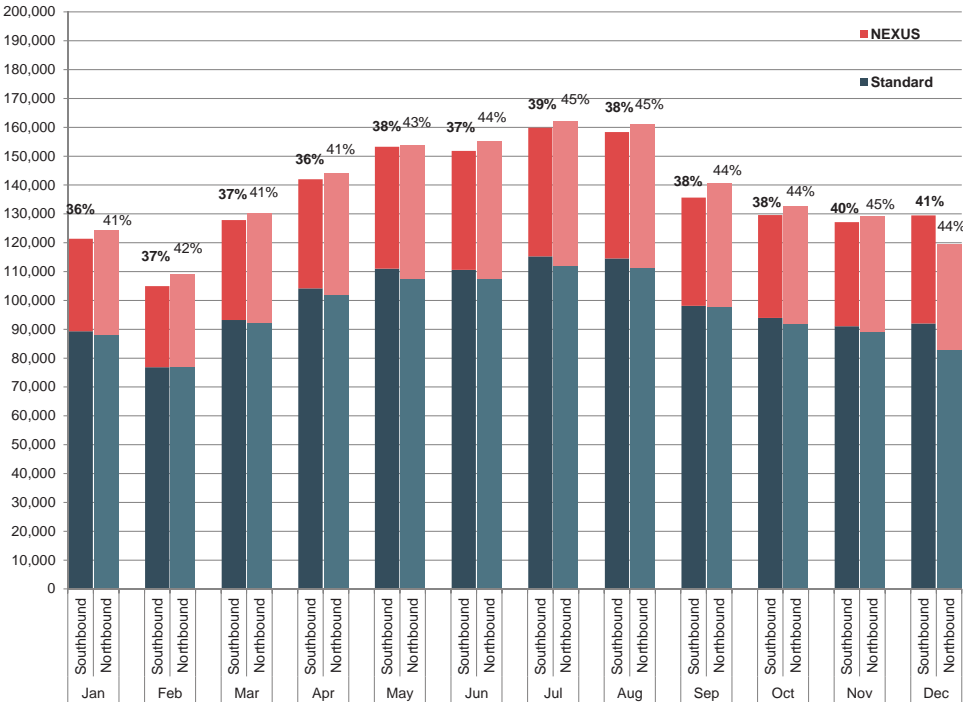
Data sources: U.S. Customs & Border Protection, Canada Border Services Agency
 Data compiled by: Whatcom Council of Governments

CASCADE GATEWAY BORDER DATA

From the International Mobility & Trade Corridor (IMTC) Program

More info at: www.theimtc.com/data; data compiled by the Whatcom Council of Governments

POINT ROBERTS/BOUNDARY BAY STANDARD VS. NEXUS, 2014



	Standard	NEXUS
Jan	88,115	36,274
Feb	77,108	32,177
Mar	92,191	37,864
Apr	102,120	41,962
May	107,603	46,268
Jun	107,400	47,785
Jul	111,840	50,226
Aug	111,285	49,658
Sep	97,968	42,634
Oct	91,850	40,850
Nov	89,285	39,955
Dec	83,054	36,431

	Standard	NEXUS
Jan	89,312	32,047
Feb	76,865	28,088
Mar	93,230	34,643
Apr	104,202	37,778
May	111,012	42,281
Jun	110,608	41,251
Jul	115,277	44,581
Aug	114,536	43,836
Sep	98,143	37,526
Oct	93,930	35,655
Nov	91,073	36,085
Dec	91,995	37,471

Data sources: U.S. Customs & Border Protection, Canada Border Services Agency
 Data compiled by: Whatcom Council of Governments