



The International Mobility & Trade Corridor Program

Core Group Meeting Agenda

Thursday, September 17, 2015

9:00am – 12:00pm

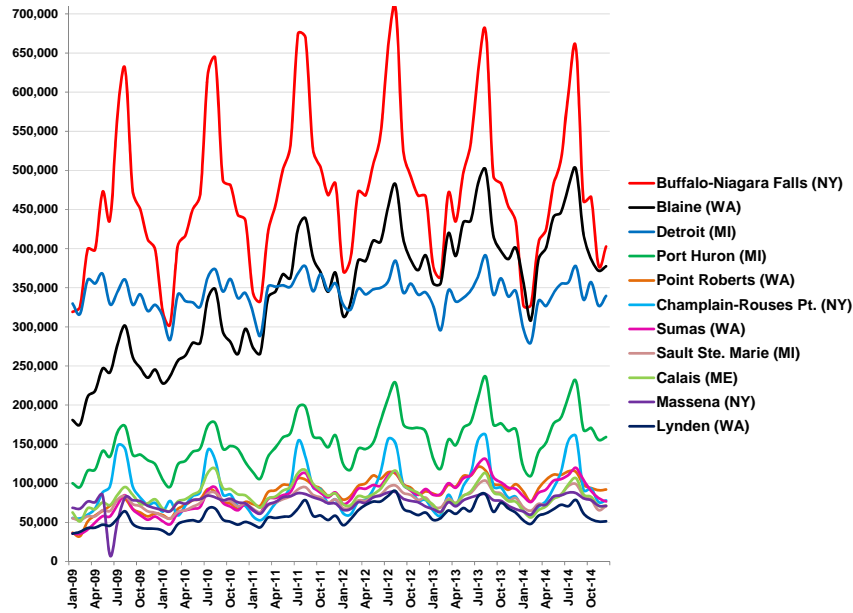
@ Hazelmere Country Club, Surrey, B.C.

Please RSVP by emailing Melissa Fanucci at melissa@wcog.org

-
1. Introductions
 2. Current event updates
 3. Cascade Gateway traffic trends
 4. B.C. Ministry of Transportation updates (B.C. Hwy 13 and B.C. Hwy 11) – John Schnablegger, BCMOT
 5. WA State Department of Transportation updates on project and planning initiatives – Todd Carlson, WSDOT
 6. Dynamic border management – RFID business case
 7. Summary of 2015 Border Freight Operations study data

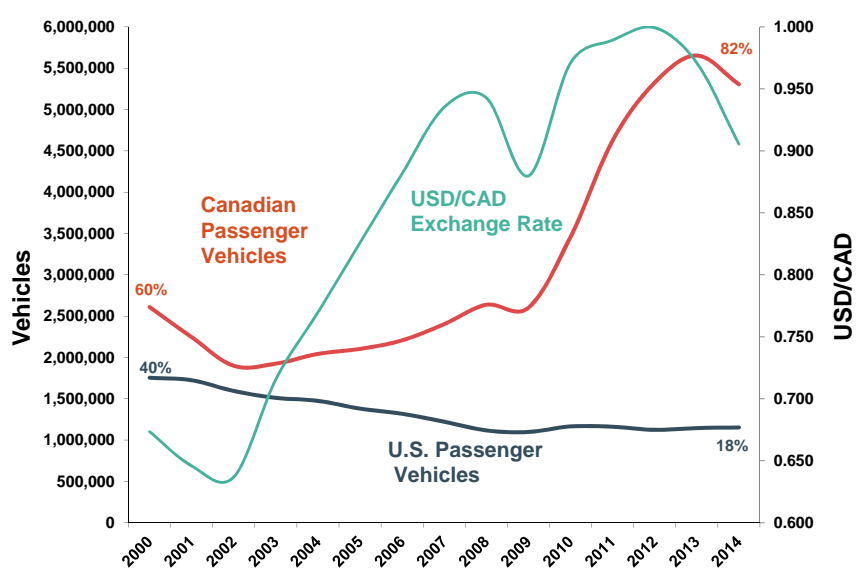
Top eleven northern border ports-of-entry

Passenger vehicles
2009 - 2014

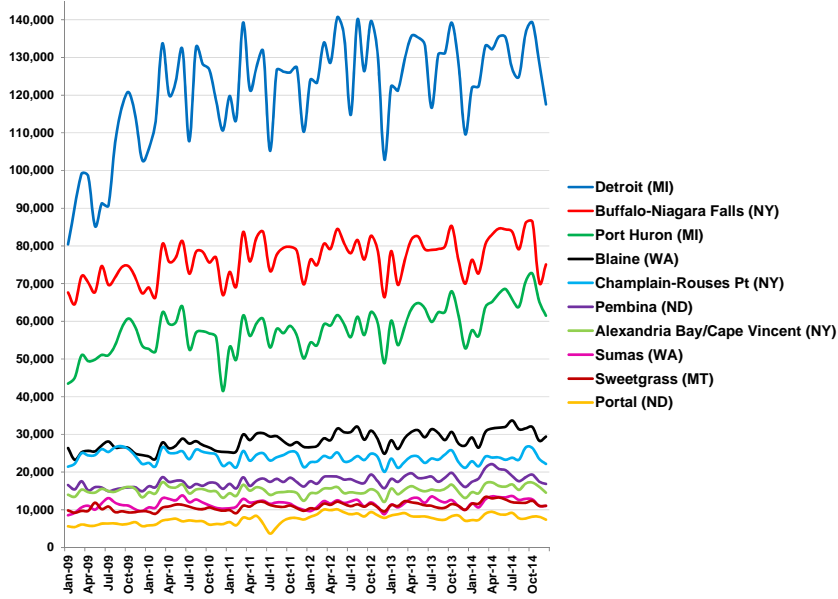


Passenger Vehicles and exchange rates

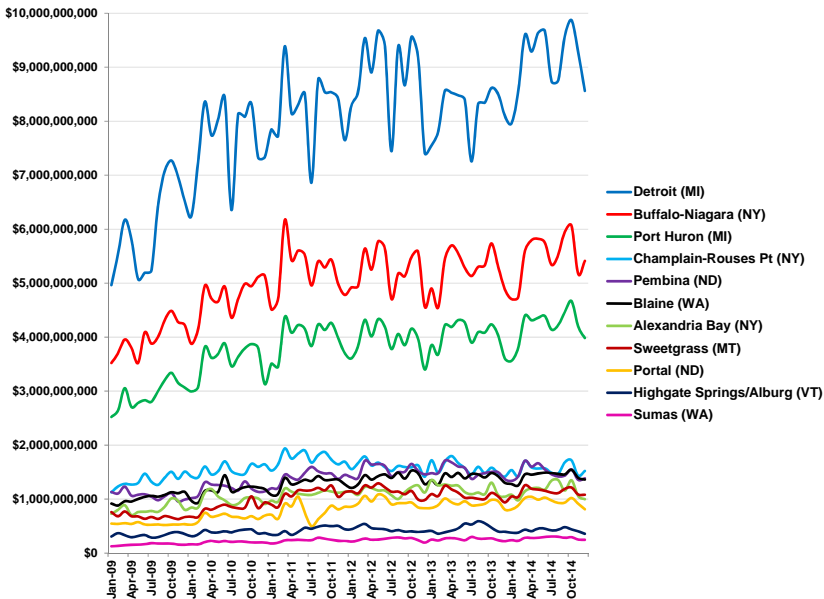
Cascade Gateway ports-of-entry
2000 - 2014



Top ten northern border ports-of-entry
Commercial vehicles
2009 - 2014

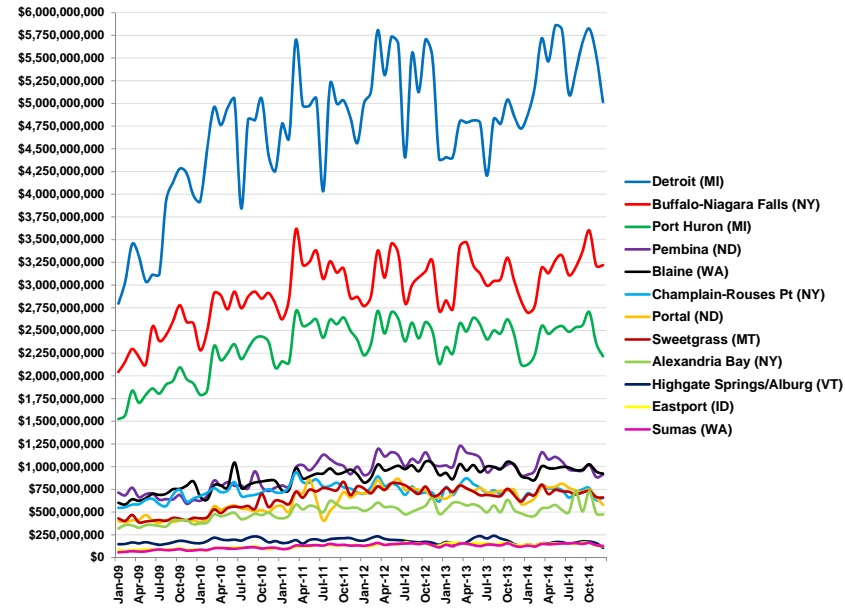


Top ten northern border ports-of-entry
Value of goods (Exports and Imports)
2009 - 2014



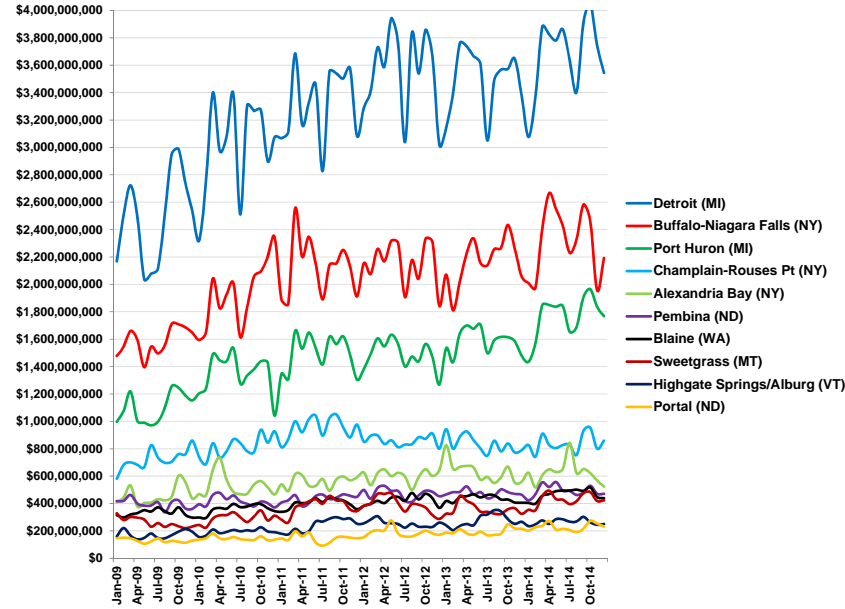
Top ten northern border ports-of-entry

Value of goods (Exports)
2009 - 2014

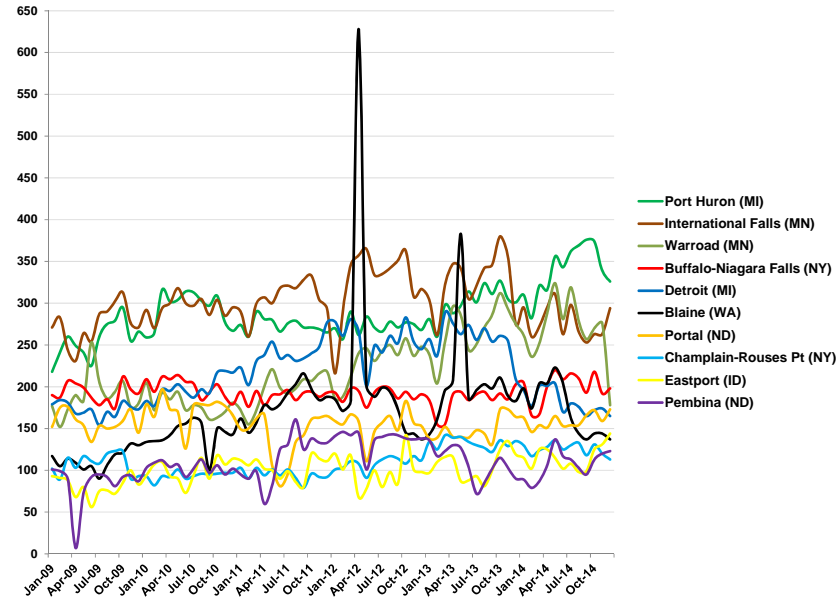


Top ten northern border ports-of-entry

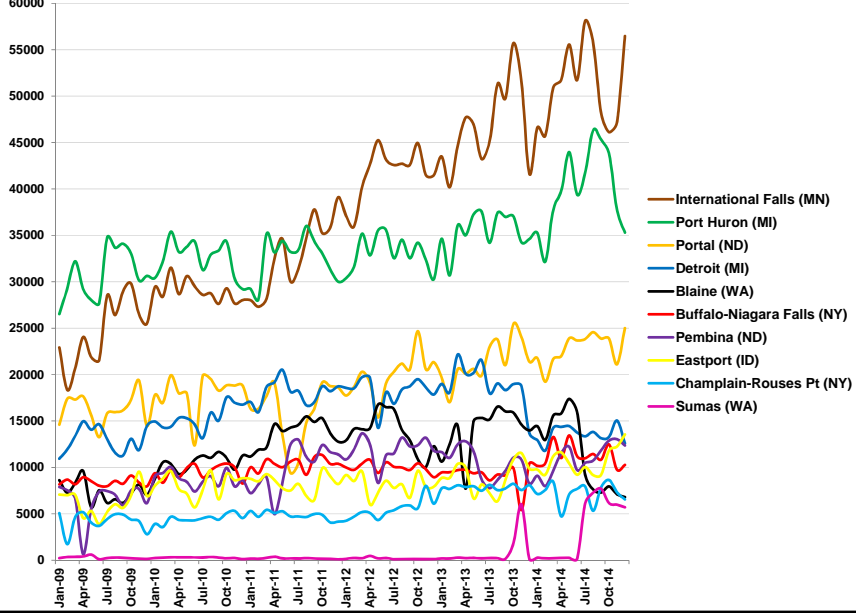
Value of goods (Imports)
2009 - 2014



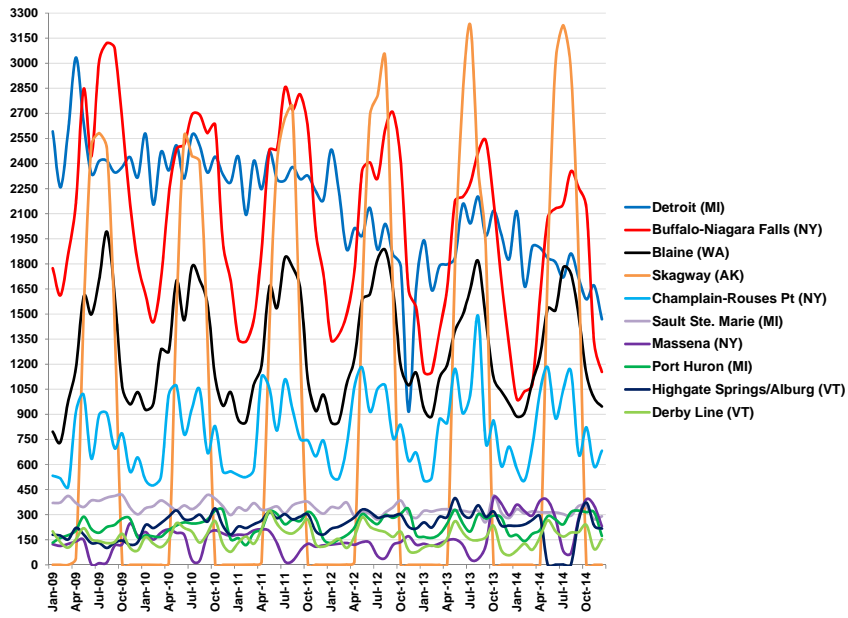
Top ten northern border ports-of-entry
Number of Trains
 2009 - 2014



Top ten northern border ports-of-entry
Train Containers (Empty and Loaded)
 2009 - 2014



Top ten northern border ports-of-entry
Buses
2009 - 2014



2015 Border Freight Operations [BFO]

- 3 commercial ports
 - Pacific Highway southbound
 - Pacific Highway northbound
 - Abbotsford-Huntingdon northbound
- 12 days
 - 8 hours a day, 0800-1600 PST
 - 4 days at each port, M-Th
- Data recorded as trucks approached inspection booths
- Data fields
 - Timestamp
 - License plate number
 - FAST lane?
 - Vehicle type
 - Carrier name and HQ location

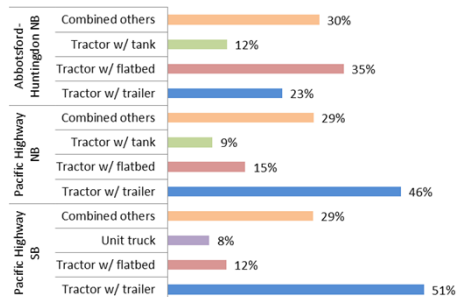


2015 BFO Analysis

Dates	Port	Direction	Records
July 6-9	Pacific Highway	Southbound	1968
July 13-16	Pacific Highway	Northbound	2092
July 20-23	Abbotsford-Huntingdon	Northbound	893
Total:			4953

FAST lane use - Pacific Highway*

Lane	Southbound		Northbound		Total	
	Count	Share	Count	Share	Count	Share
FAST	460	23%	244	12%	704	17%
Standard	1508	77%	1848	88%	3356	83%



2015 BFO Next Steps

- 2015
 - Regional cross-border carrier survey
 - Contact carriers observed crossing most frequently
 - Discern **basic** cross-border strategy (how much of business is cross-border, use of each port, etc)
 - Gather feedback about cross border environment and trusted trader programs
 - Other non-invasive questions
- 2016
 - Field data collection effort
 - All 6 land-border commercial ports in the region (3 locations, NB and SB)
 - Same/similar data collection as 2015
 - Database
 - Report
 - Present to stakeholders

